

# SCHEDA TECNICA – TUTA OVERTECH MAINE

COD. RR810

## TESSUTO

Tessuto non tessuto laminato  
50% polietilene 50% polipropilene  
Peso 63 g/m<sup>2</sup>

## DESCRIZIONE

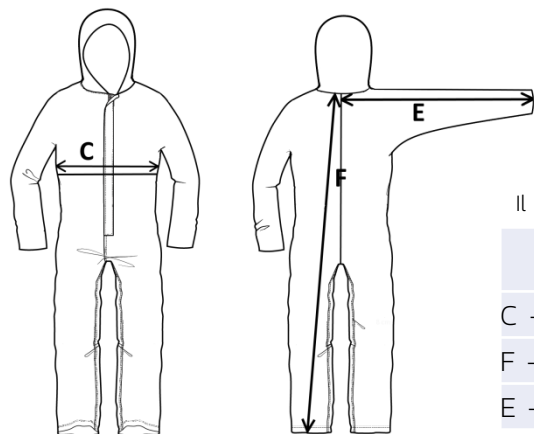
Indumento protettivo in speciale tessuto laminato, a rilascio particellare nullo, con trattamento antistatico, completo di cappuccio con elastico, bordo elastico ai polsi più aggiunta di elastico per aggancio al pollice, chiusura lampo nella parte anteriore con patta copri-zip e striscia adesiva per garantire un elevato livello di ermeticità contro i liquidi, polsi e caviglie elasticizzati, elastico posteriore in vita per una elevata aderenza al corpo.

## APPLICAZIONI

Protezione contro aerosol, liquidi o schizzi, particelle solide disperse nell'aria, microrganismi.

## TAGLIE

M, L, XL, XXL



Il margine di tolleranza produttivo, nel rispetto delle dimensioni della taglia, può essere del +/- 3%

SIZE - cm	M	L	XL	XXL
C – ½ CIRCONFERENZA TORACE	61	66	71	76
F – LUNGHEZZA TOTALE	163	173	180	185
E – LUNGHEZZA MANICA DA POLSO A CENTRO DIETRO	94	98	100	104



III<sup>a</sup> categoria

EN ISO 13688:2013

**rossini.**  
TECH



EN ISO 13982-1:2004+A1:2010 TYPE 5B



EN 13034:2005+A1:2009 TYPE 6B



EN 1073-2:2002



EN 1149-5:2018



EN 14126:2003+AC:2004



 **TECHNICAL SHEET – OVERTECH MAINE COVERALLS**  
CODE RR810

**CE** 3RD CATEGORY  
EN ISO 13688:2013

**rossini.**  
TECH

**FABRIC**

Laminated Non-woven Fabric  
50% polyethylene 50% polypropylene  
Weight 63 g/m<sup>2</sup>

**DESCRIPTION**

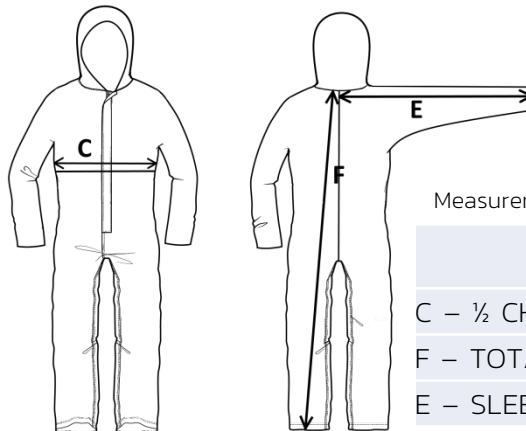
Protective clothing made of special laminated fabric material, with no particle release, with anti-static treatment, with elastic hood, elastic band at the wrists with added elastic for thumb attachment, front zip closure with flap and adhesive strip to ensure a high level of tightness against liquids, elasticated wrists and ankles, back elastic at the waist for an excellent fit to the body.

**USE**

Protection against liquid aerosols or splashes, airborne solid particles, microorganisms.






**SIZES**

M, L, XL, XXL



Measurements may vary +/- 3%, tolerance within size scale

SIZE - cm	M	L	XL	XXL
C – ½ CHEST CIRCUMFERENCE	61	66	71	76
F – TOTAL LENGTH	163	173	180	185
E – SLEEVE LENGTH FROM WRIST POINT TO CENTER BACK	94	98	100	104

-  EN ISO 13982-1:2004+A1:2010 TYPE 5B
-  EN 13034:2005+A1:2009 TYPE 6B
-  EN 1073-2:2002
-  EN 1149-5:2018
-  EN 14126:2003+AC:2004



 **FICHA TÉCNICA – MONO OVERTECH MAINE**  
CÓD. RR810

**COMPOSICIÓN**

Tela no tejida laminated  
50% polyethylene 50% polypropylene  
Peso 63 g/m<sup>2</sup>

**DESCRIPCIÓN**

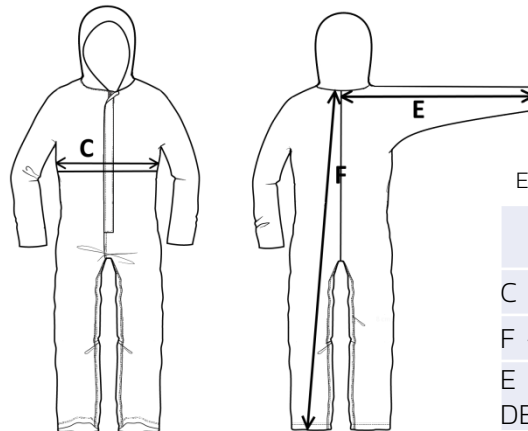
Prenda de protección realizada en material especial laminado, sin desprendimiento de partículas, con tratamiento antiestático, dotada de capucha con elástico, borde elástico en los puños más un elástico adicional para enganchar los pulgares, cremallera en la parte delantera con solapa cubrecremallera y tira adhesiva para asegurar un elevado nivel de hermeticidad contra los líquidos, puños y tobillos elásticos, elástico en la parte posterior de la cintura para una gran adherencia al cuerpo.

**APLICACIONES**

Protección contra aerosoles, líquidos y salpicaduras de baja presión, partículas sólidas por vía aérea y diferentes campos de aplicación en el sector químico.


**TALLAS**

M, L, XL, XXL








El margen de tolerancia productiva, respetando las dimensiones de la talla, puede ser de +/- 3%

SIZE - cm	M	L	XL	XXL
C – ½ CIRCUNFERENCIA TORÁCICA	61	66	71	76
F – LONGITUD TOTAL	163	173	180	185
E – LONGITUD DE LA MANGA DE LA MUÑECA AL CENTRO DETRÁS	94	98	100	104

 IIIª categoría  
EN ISO 13688:2013

**rossini.**  
TECH

-  EN ISO 13982-1:2004+A1:2010 TYPE 5B
-  EN 13034:2005+A1:2009 TYPE 6B
-  EN 1073-2:2002
-  EN 1149-5:2018
-  EN 14126:2003+AC:2004



# FISA TEHNICA – COMBINEZON OVERTECH MAINE

COD. RR810

## MATERIAL

Material neșesute

50% Polietileno, 50% Polipropileno

Greutate 63 g/m<sup>2</sup>

## DESCRIERE

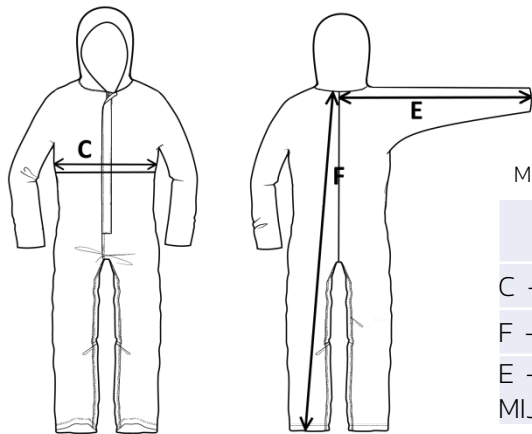
Îmbrăcăminte de protecție din material laminat special, cu dispersie de particule nulă, cu tratament antistatic, dotat cu capișon cu elastic, manșete elastice și adaos de elastic la degetul mare pentru agățare, fermoar în partea din față cu clapă de acoperire și bandă adezivă pentru garantarea unui grad ermetic ridicat pentru lichide, manșete cu elastic la mâneci și pantaloni, elastic pe talie în spate pentru o aderență excelentă pe corp.

## UTILIZĂRI

Protecție împotriva aerosolilor lichizi sau stropirilor, particulelor solide dispersate în aer și a microorganismelor.

## MĂRIMI

M, L, XL, XXL



Marja de toleranță a producției, respectând dimensiunile mărimii, poate fi de +/-3%

SIZE - cm	M	L	XL	XXL
C – ½ CIRCUMFERINȚĂ TORACE	61	66	71	76
F – LUNGIME TOTALĂ	163	173	180	185
E – LUNGIME MÂNECĂ DE LA MANȘETĂ PÂNĂ ÎN MIJLOCUL SPATELUI	94	98	100	104



Categoria III

EN ISO 13688:2013

**rossini.**  
TECH



EN ISO 13982-1:2004+A1:2010 TYPE 5B



EN 13034:2005+A1:2009 TYPE 6B



EN 1073-2:2002



EN 1149-5:2018



EN 14126:2003+AC:2004



# FICHE TECHNIQUE – COMBINAISON OVERTECH MAINE

## CODE RR810

### TISSU

Tissu non tissé laminé  
50% polyéthylène, 50% polypropylène  
Poids 63 g/m<sup>2</sup>

### DESCRIPTION

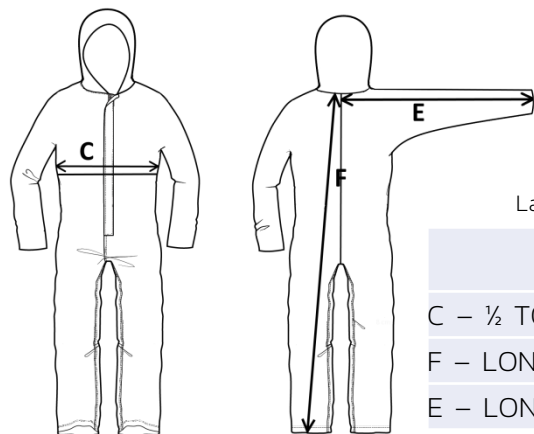
Combinaison de protection en matériau spécial à libération particulaire nulle, avec capuche avec élastique, fermeture éclair à l'avant avec rabat de couverture et bande adhésive pour assurer l'étanchéité contre les liquides, les poignets et les chevilles élastiques, élastique arrière à la taille pour une adhérence élevée au corps.

### UTILISATION

Protection contre les aérosols liquides ou les éclaboussures, les particules solides dispersées dans l'air, les micro-organismes.

### TAILLES

M, L, XL, XXL



La marge de tolérance de production, dans le respect des dimensions de la taille, peut être de +/- 3 %

SIZE - cm	M	L	XL	XXL
C – ½ TOUR DE POITRINE	61	66	71	76
F – LONGUEUR TOTALE	163	173	180	185
E – LONGUEUR MANCHE DU POIGNET AU CENTRE ARRIERE	94	98	100	104



3e Catégorie  
EN ISO 13688:2013

**rossini.**  
TECH



EN ISO 13982-1:2004+A1:2010 TYPE 5B



EN 13034:2005+A1:2009 TYPE 6B



EN 1073-2:2002



EN 1149-5:2018



EN 14126:2003+AC:2004

