



DETTAGLI

- 2 tasche
- 1 tasca sul retro
- Elastico e coulisse
- Chiusura zip

COLORE

F04 Peperoncino

TESSUTO

100% cotone
168 g / m²

TAGLIE

XS ÷ 4XL
Regular Fit



Le misure indicate si riferiscono alle taglie **S** per i capi femminili, **L** per i capi maschili. Per i capi a taglia unica le misure indicate sono effettive.

Pantalone dalla vestibilità regular e taglio trendy, realizzato in tessuto 100% cotone dalla mano. Proposto nella intramontabile stampa Peperoncino. Fascione con coulisse, due tasche sui fianchi e piccola tasca posteriore.

COLORI DISPONIBILI



F04 Peperoncino

TABELLE TAGLIE
E CORRISPONDENZE

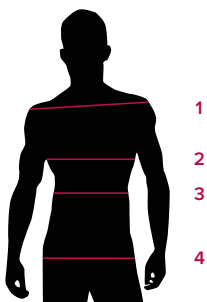
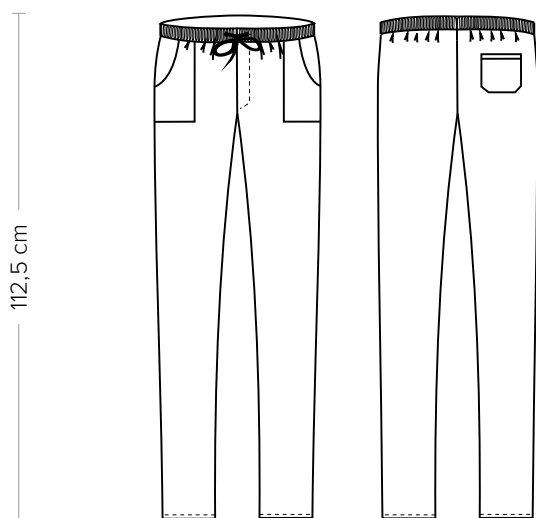


TABELLA ST-P3 REGULAR FIT

TAGLIA	XXS	XS	S	M	L	XL	XXL	XXXL	4XL	5XL
1 - SPALLE										
2 - TORACE										
3 - VITA	67-71	72-76	77-81	82-86	87-91	92-97	98-104	105-111	112-118	119-125
4 - BACINO	92-96	97-101	102-105	106-109	110-113	114-119	120-126	127-132	133-138	139-144

GUIDA ALLE TAGLIE **1)** Prendere le misure anatomiche (corpo con abbigliamento intimo) senza stringere mantenendo ben teso il metro. **Nota:** nel caso vogliate indossare dei camici già con dell'abbigliamento sotto prendete le misure già abbigliati. **2)** Nel caso tra le misure prese vi fosse una misura a cavallo fra 2 taglie vi consigliamo di prendere quella più grande. **3)** Le misure della tabella sono espresse in centimetri.



DETAILS

- 2 pockets
- 1 rear pocket
- Elasticated waistband with drawstring
- Zip fly

SIZES

XS ÷ 4XL
Regular Fit

COLOURS

F04 Chili

FABRIC

100% cotton
168 g / m²



The measures indicated refer to sizes **S** for women, **L** for men. For one-size-fits-all garments, the measurements indicated are effective.

Trousers with a regular fit and trendy cut, made of 100% cotton fabric from the hand. Proposed in the timeless Chili print. Band with drawstring, two side pockets and small back pocket.

COLORI DISPONIBILI



F04 Chili

SIZE TABLES AND CORRESPONDENCES

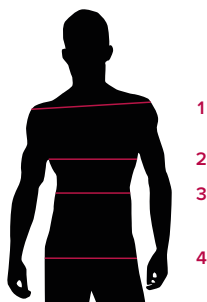


TABLE ST-P3 REGULAR FIT										
SIZE	XXS	XS	S	M	L	XL	XXL	XXXL	4XL	5XL
1 - SHOULDERS										
2 - CHEST										
3 - WAIST	67-71	72-76	77-81	82-86	87-91	92-97	98-104	105-111	112-118	119-125
4 - HIPS	92-96	97-101	102-105	106-109	110-113	114-119	120-126	127-132	133-138	139-144

SIZE GUIDE **1)** Take the anatomical measurements (body with underwear) without tightening, keeping the measuring tape taut. Note: in case you want to wear of the gowns already with the clothing underneath take the measurements already dressed. **2)** If there is a measure between 2 sizes between the measurements taken, we advise you to take the bigger one. **3)** The measurements in the table are expressed in centimeters.