

DETTAGLI

- 2 tasche
- 1 tasca sul retro
- Elastico e coulisse
- Chiusura zip

COLORE

- R32 Rigato nero
- R12 Rigato grigio

TESSUTO

- 70% cotone
- 30% poliestere
- 145 g / m²



TAGLIE

- XS ÷ 5XL
- Regular Fit

Le misure indicate si riferiscono alle taglie **S** per i capi femminili, **L** per i capi maschili. Per i capi a taglia unica le misure indicate sono effettive.

Pantalone dalla vestibilità regular e taglio trendy, realizzato in elegante tessuto gessato 70% cotone e 30% poliestere dalla mano morbida e resistente al candeggio. Proposto in due varianti: fondo nero con riga grigia e fondo grigio con riga nera. Fascione con coulisse, due tasche sui fianchi e piccola tasca posteriore.

COLORI DISPONIBILI



R32 Rigato nero



R12 Rigato grigio

TABELLE TAGLIE
E CORRISPONDENZE

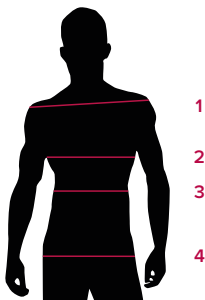
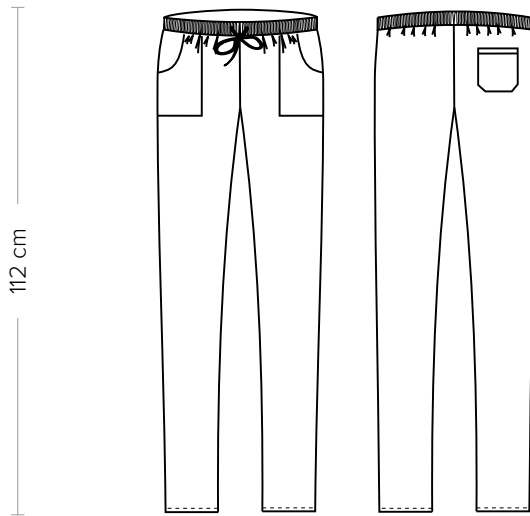


TABELLA ST-P3 REGULAR FIT

TAGLIA	XXS	XS	S	M	L	XL	XXL	XXXL	4XL	5XL
1 - SPALLE										
2 - TORACE										
3 - VITA	67-71	72-76	77-81	82-86	87-91	92-97	98-104	105-111	112-118	119-125
4 - BACINO	92-96	97-101	102-105	106-109	110-113	114-119	120-126	127-132	133-138	139-144

GUIDA ALLE TAGLIE **1)** Prendere le misure anatomiche (corpo con abbigliamento intimo) senza stringere mantenendo ben teso il metro. **Nota:** nel caso vogliate indossare dei camici già con dell'abbigliamento sotto prendete le misure già abbigliati. **2)** Nel caso tra le misure prese vi fosse una misura a cavallo fra 2 taglie vi consigliamo di prendere quella più grande. **3)** Le misure della tabella sono espresse in centimetri.



DETAILS

- 2 pockets
- 1 rear pocket
- Elasticated waistband with drawstring
- Zip fly

COLOURS

- R32 Striped black
- R12 Striped grey

FABRIC

- 70% cotton
- 30% polyester
- 145 g / m²



SIZES

- XS ÷ 5XL
- Regular Fit

The measures indicated refer to sizes **S** for women, **L** for men. For one-size-fits-all garments, the measurements indicated are effective.

Trousers with a regular fit and trendy cut, made of elegant 70% cotton and 30% polyester pinstripe fabric with a soft and resistant hand to bleaching. Proposed in two variants: black background with gray line and gray background with black line. Band with drawstring, two pockets on the hips and small back pocket.

AVAILABLE COLOURS



R32 Striped black



R12 Striped grey

SIZE TABLES AND CORRESPONDENCES

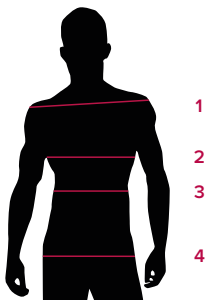


TABLE ST-P3 REGULAR FIT

SIZE	XXS	XS	S	M	L	XL	XXL	XXXL	4XL	5XL
1 - SHOULDERS										
2 - CHEST										
3 - WAIST	67-71	72-76	77-81	82-86	87-91	92-97	98-104	105-111	112-118	119-125
4 - HIPS	92-96	97-101	102-105	106-109	110-113	114-119	120-126	127-132	133-138	139-144

SIZE GUIDE **1)** Take the anatomical measurements (body with underwear) without tightening, keeping the measuring tape taut. Note: in case you want to wear of the gowns already with the clothing underneath take the measurements already dressed. **2)** If there is a measure between 2 sizes between the measurements taken, we advise you to take the bigger one. **3)** The measurements in the table are expressed in centimeters.