

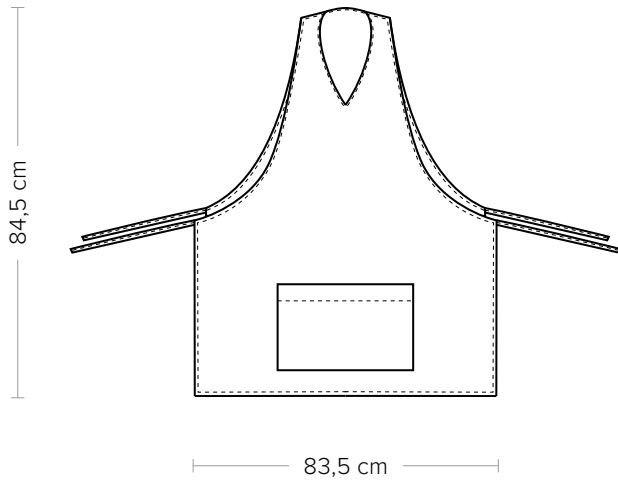
# LONDON

CODICE ARTICOLO

COD. Q8HX0119

14P08H479

**Giblor's**  
italian work/life specialist



## DETTAGLI

- Scamiciato
- Coperto dietro
- 1 grande tasca

## COLORE

F05 Menu nero

## TESSUTO

100% cotone  
168 g / m<sup>2</sup>

## TAGLIE

Taglia unica



Le misure indicate si riferiscono alle taglie **S** per i capi femminili, **L** per i capi maschili. Per i capi a taglia unica le misure indicate sono effettive.

Lo scamiciato London è realizzato in cotone 100%. La linea mostra uno scollo a V, una grande tasca centrale e il retro coperto. É ideale per bar, gelaterie, caffetterie e gastronomie.

## COLORI DISPONIBILI



F05 Menu nero

**GIBLORS.COM**

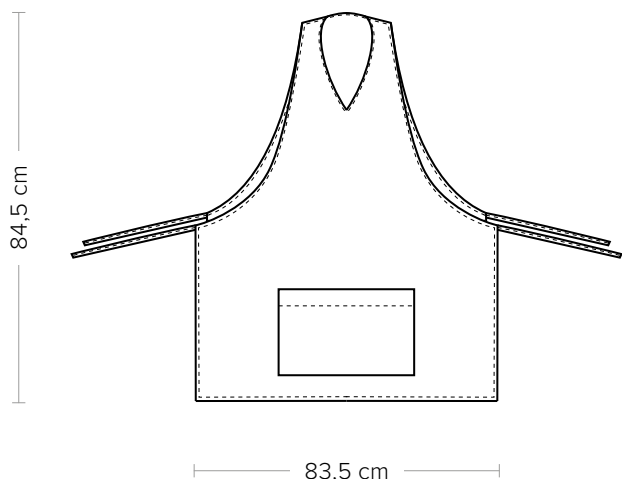
# LONDON

ITEM CODE

COD. Q8HX0119

14P08H479

**Giblor's**  
italian work/life specialist



## DETAILS

- Pinafore
- Covered backside
- 1 big pocket

## SIZES

One size

## COLOURS

F05 Black menu

## FABRIC

100% cotton  
168 g / m<sup>2</sup>



The measures indicated refer to sizes **S** for women, **L** for men. For one-size-fits-all garments, the measurements indicated are effective.

The London pinafore is made of 100% cotton. The line shows a V-neck, a large central pocket and a covered back. it is ideal for bars, ice cream parlors, cafes and delicatessens.

## COLORI DISPONIBILI



F05 Black menu

**GIBLORS.COM**