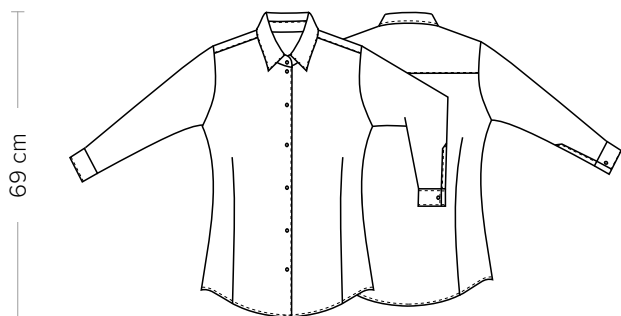


**DETTAGLI**

- Collo classico

**TAGLIE**

XS ÷ XXXL  
Regular Fit



**COLORE**

U32 Nero

**TESSUTO**

65% poliestere  
35% cotone  
110 g / m<sup>2</sup>



Le misure indicate si riferiscono alle taglie **S** per i capi femminili, **L** per i capi maschili. Per i capi a taglia unica le misure indicate sono effettive.

Camicia nera da donna realizzata in poliestere cotone easy care per una facile stiratura. Presenta un taglio Regular Fit e chiusura frontale con sette bottoni.

**COLORI DISPONIBILI**



U32 Nero

TABELLE TAGLIE  
E CORRISPONDENZE

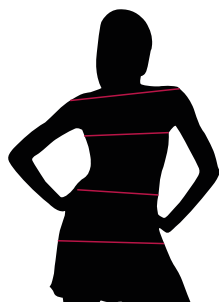


TABELLA ST-N2 REGULAR FIT								
TAGLIA	XS	S	M	L	XL	XXL	XXXL	4XL
1 - SPALLE								
2 - CIRCONFERENZA TORACE	83-87	88-91	92-97	98-105	106-113	114-121	122-128	129-134
3 - CIRCONFERENZA VITA	75-79	80-83	84-89	90-97	98-106	107-115	115-124	125-135
4 - CIRCONFERENZA BACINO								

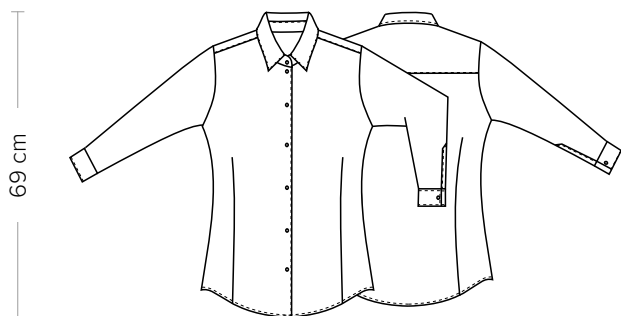
**GUIDA ALLE TAGLIE** **1)** Prendere le misure anatomiche (corpo con abbigliamento intimo) senza stringere mantenendo ben teso il metro. **Nota:** nel caso vogliate indossare dei camici già con dell'abbigliamento sotto prendete le misure già abbigliati. **2)** Nel caso tra le misure prese vi fosse una misura a cavallo fra 2 taglie vi consigliamo di prendere quella più grande. **3)** Le misure della tabella sono espresse in centimetri.

## DETAILS

- Classic collar

## SIZES

XS ÷ XXXL  
Regular Fit



## COLOURS

U32 Black

## FABRIC

65% polyester  
35% cotton  
110 g / m<sup>2</sup>



The measures indicated refer to sizes **S** for women, **L** for men. For one-size-fits-all garments, the measurements indicated are effective.

Black blouse made of easy-care polyester cotton for easy ironing. It has a Regular Fit and a front fastening with seven buttons.

## AVAILABLE COLOURS



U32 Black

**SIZE TABLES  
AND CORRESPONDENCES**

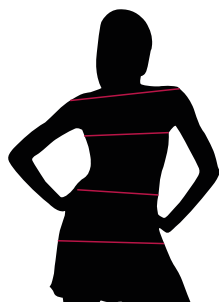


TABLE ST-N2 REGULAR FIT								
SIZE	XS	S	M	L	XL	XXL	XXXL	4XL
1 - SHOULDERS								
2 - CHEST CIRCUMFERENCE	83-87	88-91	92-97	98-105	106-113	114-121	122-128	129-134
3 - WAIST CIRCUMFERENCE	75-79	80-83	84-89	90-97	98-106	107-115	115-124	125-135
4 - HIPS CIRCUMFERENCE								

**SIZE GUIDE** **1)** Take the anatomical measurements (body with underwear) without tightening, keeping the measuring tape taut. Note: in case you want to wear of the gowns already with the clothing underneath take the measurements already dressed. **2)** If there is a measure between 2 sizes between the measurements taken, we advise you to take the bigger one. **3)** The measurements in the table are expressed in centimeters.