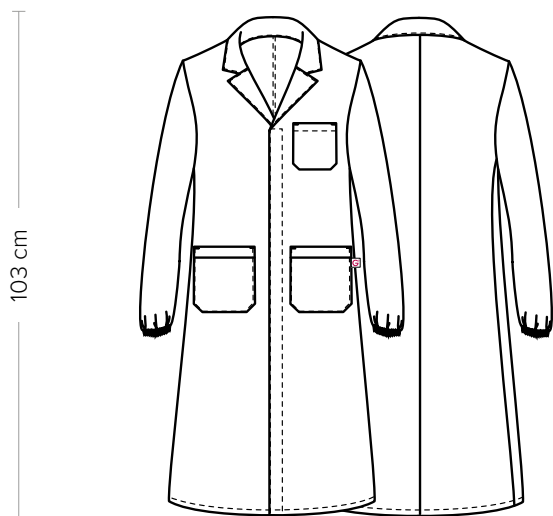


# CAMILLO

CODICE ARTICOLO

COD. K3R00350

**Giblor's**  
italian work/life specialist



## DETTAGLI

- Abbottonatura nascosta con automatici
- Taschino sul petto
- 2 tasche
- Polsino con elastico

## COLORE

C01 Bianco

## TESSUTO

100% cotone  
185 g / m<sup>2</sup>

## TAGLIE

S ÷ 3XL

REGULAR FIT



Le misure indicate si riferiscono alle taglie **S** per i capi femminili, **L** per i capi maschili. Per i capi a taglia unica le misure indicate sono effettive.

## COLORI DISPONIBILI



C01 Bianco

TABELLE TAGLIE  
E CORRISPONDENZE

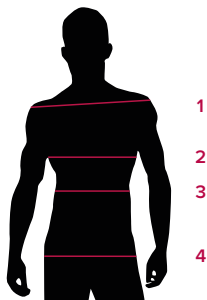


TABELLA ST-R6 REGULAR FIT						
TAGLIA	S	M	L	XL	XXL	3XL
1 - SPALLE						
2 - CIRCONFERENZA TORACE	100-110	111-115	116-119	120-128	129-135	136-145
3 - CIRCONFERENZA VITA	95-100	101-104	105-108	109-116	117-124	125-134
4 - CIRCONFERENZA BACINO	100-109	110-113	104-118	119-125	126-133	134-143

**GUIDA ALLE TAGLIE** **1)** Prendere le misure anatomiche (corpo con abbigliamento intimo) senza stringere mantenendo ben teso il metro. **Nota:** nel caso vogliate indossare dei camici già con dell'abbigliamento sotto prendete le misure già abbigliati. **2)** Nel caso tra le misure prese vi fosse una misura a cavallo fra 2 taglie vi consigliamo di prendere quella più grande. **3)** Le misure della tabella sono espresse in centimetri.

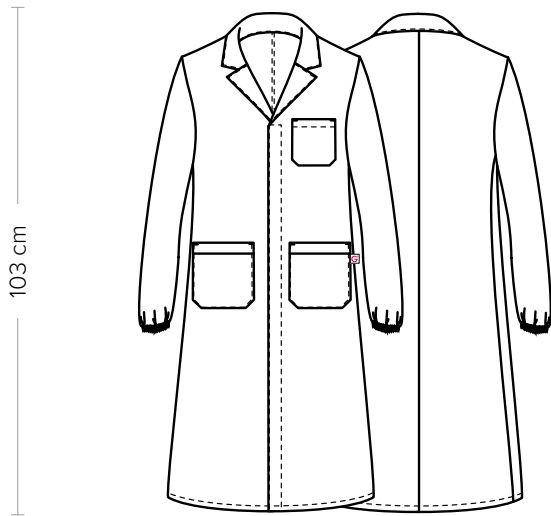
GIBLORS.COM

# CAMILLO

ITEM CODE

COD. K3R00350

**Giblor's**  
italian work/life specialist



## DETAILS

- Concealed buttoning with press studs
- Breast pocket
- 2 pockets
- Cuff with elastic band

## SIZES

S ÷ 3XL

REGULAR FIT

## COLOURS

C01 White

## FABRIC

100% cotton  
185 g / m<sup>2</sup>



The measures indicated refer to sizes **S** for women, **L** for men. For one-size-fits-all garments, the measurements indicated are effective.

## AVAILABLE COLOURS



C01 White

SIZE TABLES  
AND CORRESPONDENCES

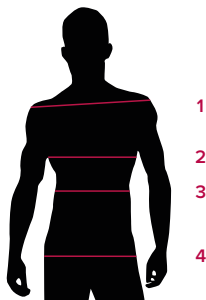


TABLE ST-R6 REGULAR FIT						
SIZE	S	M	L	XL	XXL	3XL
1 - SHOULDERS						
2 - CHEST CIRCUMFERENCE	100-110	111-115	116-119	120-128	129-135	136-145
3 - WAIST CIRCUMFERENCE	95-100	101-104	105-108	109-116	117-124	125-134
4 - HIPS CIRCUMFERENCE	100-109	110-113	104-118	119-125	126-133	134-143

**SIZE GUIDE 1)** Take the anatomical measurements (body with underwear) without tightening, keeping the measuring tape taut. **Note:** in case you want to wear of the gowns already with the clothing underneath take the measurements already dressed. **2)** If there is a measure between 2 sizes between the measurements taken, we advise you to take the bigger one. **3)** The measurements in the table are expressed in centimeters.

GIBLORS.COM