



DETTAGLI

- Abbottonatura a vista con bottoni 4 fori
- Taschino sul petto
- 2 tasche
- Polsino con bottone 4 fori
- Martingala

COLORE

C01 Bianco

TESSUTO

100% cotone
185 g / m²

TAGLIE

XS ÷ 3XL

REGULAR FIT



Le misure indicate si riferiscono alle taglie **S** per i capi femminili, **L** per i capi maschili. Per i capi a taglia unica le misure indicate sono effettive.

COLORI DISPONIBILI



C01 Bianco

TABELLE TAGLIE
E CORRISPONDENZE

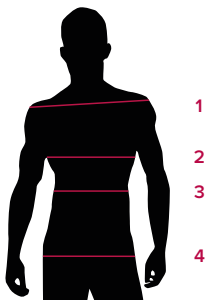


TABELLA ST-R4 REGULAR FIT

TAGLIA	XS	S	M	L	XL	XXL	3XL	4XL	5XL
1 - SPALLE									
2 - TORACE circonferenza	97-103	103-109	109-115	115-121	121-129	129-137	137-145	145-153	153-161
3 - VITA circonferenza	93-98	98-104	104-110	110-116	116-124	124-132	132-140	140-148	148-156
4 - BACINO circonferenza	93-98	98-104	104-110	110-116	116-124	124-132	132-140	140-148	148-156

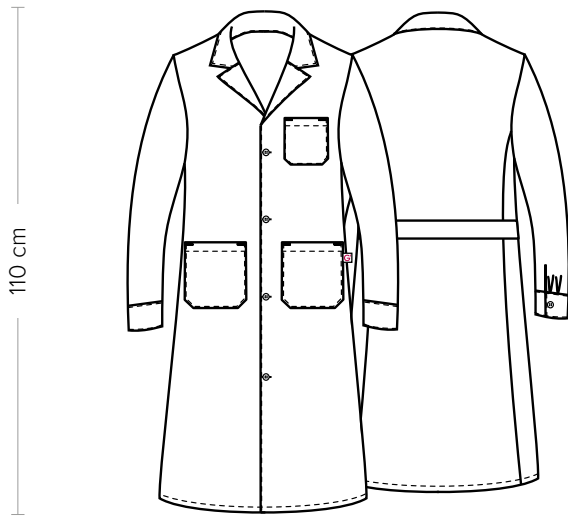
GUIDA ALLE TAGLIE **1)** Prendere le misure anatomiche (corpo con abbigliamento intimo) senza stringere mantenendo ben teso il metro. **Nota:** nel caso vogliate indossare dei camici già con dell'abbigliamento sotto prendete le misure già abbigliati. **2)** Nel caso tra le misure prese vi fosse una misura a cavallo fra 2 taglie vi consigliamo di prendere quella più grande. **3)** Le misure della tabella sono espresse in centimetri.

ETHAN

ITEM CODE

COD. K3R00290

Giblor's
italian work/life specialist



DETAILS

- Visible buttoning with 4-hole buttons
- Breast pocket
- 2 pockets
- Cuff with 4-hole buttons
- Half belt on the back

SIZES

XS ÷ 3XL

REGULAR FIT

COLOURS

C01 White

FABRIC

100% cotton
185 g / m²



The measures indicated refer to sizes **S** for women, **L** for men. For one-size-fits-all garments, the measurements indicated are effective.

AVAILABLE COLOURS



C01 White

SIZE TABLES
AND CORRESPONDENCES

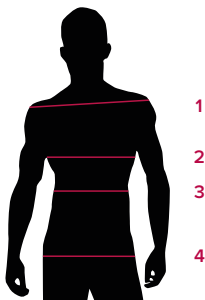


TABLE ST-R4 REGULAR FIT

SIZE	XS	S	M	L	XL	XXL	3XL	4XL	5XL
1 - SHOULDERS									
2 - CHEST circumference	97-103	103-109	109-115	115-121	121-129	129-137	137-145	145-153	153-161
3 - WAIST circumference	93-98	98-104	104-110	110-116	116-124	124-132	132-140	140-148	148-156
4 - HIPS circumference	93-98	98-104	104-110	110-116	116-124	124-132	132-140	140-148	148-156

SIZE GUIDE 1) Take the anatomical measurements (body with underwear) without tightening, keeping the measuring tape taut. **Note:** in case you want to wear of the gowns already with the clothing underneath take the measurements already dressed. **2)** If there is a measure between 2 sizes between the measurements taken, we advise you to take the bigger one. **3)** The measurements in the table are expressed in centimeters.

GIBLORS.COM