

DETTAGLI

- Pantaloni unisex
- Elastico e coulisse in vita
- 2 tasche davanti
- 1 tasca sul retro

TAGLIE

XS ÷ 5XL

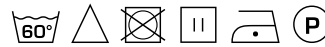
SLIM FIT

COLORE

M18 Azzurro
C10 Oliva
U39 Petrolio
U40 Ottanio
Z46 Fucsia
Z47 Prugna

TESSUTO

100% poliestere
110 g / m²



Le misure indicate si riferiscono alle taglie **S** per i capi femminili, **L** per i capi maschili. Per i capi a taglia unica le misure indicate sono effettive.

Il pantalone Alan è un articolo versatile, adatto a diversi ambienti, come spa, studi medici ed ho.re.ca. È stato rinnovato, utilizzando il nuovo **G-TECH PRO**, un tessuto dalle incredibili performance: antibatterico, anti-odore, traspirante, lavabile ad alte temperature, resistente agli spruzzi di candeggina, si asciuga velocemente ed è no-stiro. Il pantalone dalla vestibilità Slim Fit ha un elastico alto di 4 cm ed una coulisse che cinge la vita. Presenta due tasche sui fianchi e una piccola tasca posteriore. Disponibile in diverse varianti colori: bianco, beige, marrone, verde militare, grigio, blu, nero, azzurro, oliva, petrolio, ottanio, fucsia, e prugna, per soddisfare le richieste dei clienti più esigenti.

COLORI DISPONIBILI



M18 Azzurro



C10 Oliva



U39 Petrolio



U40 Ottanio



Z46 Fucsia



Z47 Prugna

TABELLE TAGLIE
E CORRISPONDENZE

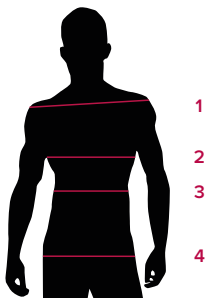


TABELLA ST-P2 SLIM FIT

TAGLIA	XXS	XS	S	M	L	XL	XXL	3XL	4XL	5XL
1 - SPALLE										
2 - TORACE										
3 - VITA	72-81	81-85	85-89	89-93	93-97	97-103	103-109	109-115	115-121	121-129
4 - BACINO	87-91	91-95	95-100	100-104	104-108	108-115	115-121	121-127	127-133	133-140

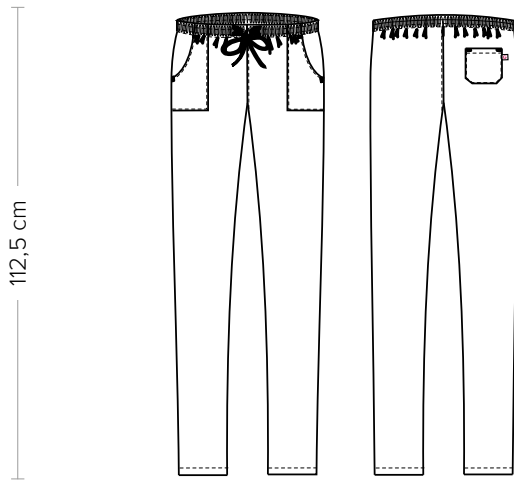
GUIDA ALLE TAGLIE **1)** Prendere le misure anatomiche (corpo con abbigliamento intimo) senza stringere mantenendo ben teso il metro. **Nota:** nel caso vogliate indossare dei camici già con dell'abbigliamento sotto prendete le misure già abbiagliati. **2)** Nel caso tra le misure prese vi fosse una misura a cavallo fra 2 taglie vi consigliamo di prendere quella più grande. **3)** Le misure della tabella sono espresse in centimetri.

ALAN

ITEM CODE

COD. K3P00694

Giblor's
italian work/life specialist



DETAILS

- Unisex pants
- Elasticated waistband with drawstring
- 2 front pockets
- 1 rear pocket

SIZES

XS ÷ 5XL

SLIM FIT

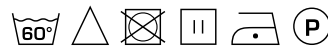
COLOURS

- M18 Light blue
- C10 Olive
- U39 Petroleum blue
- U40 Teal
- Z46 Fuchsia
- Z47 Purple

FABRIC
100% polyester
110 g / m²



sorona
AGILE



The measures indicated refer to sizes **S** for women, **L** for men. For one-size-fits-all garments, the measurements indicated are effective.

Alan pants are a versatile, suitable for different environments, such as spas, medical practices and ho.re.ca. environments. They have been renewed by using the new **G-TECH PRO**, a fabric with incredible performances: antibacterial, anti-odour, breathable and washable at high temperatures, it tolerates bleach sprays, dries quickly without ironing and it does not fade. The slim-fit pants have a high elastic band (4 cm) and a drawstring that surrounds the waist. They feature two side pockets and a small back one. Available in different colour variations - white, beige, brown, military green, grey, blue, black, light blue, olive, petroleum blue, teal, fuchsia and purple - to meet the needs of the most demanding customers.

AVAILABLE COLOURS



M18 Light blue

C10 Olive

U39 Petroleum blue

U40 Teal

Z46 Fuchsia

Z47 Purple

SIZE TABLES
AND CORRESPONDENCES

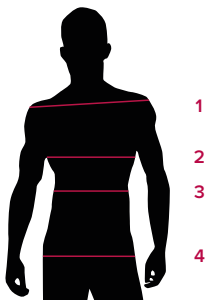


TABLE ST-P2 SLIM FIT

SIZE	XXS	XS	S	M	L	XL	XXL	3XL	4XL	5XL
1 - SHOULDERS										
2 - CHEST										
3 - WAIST	72-81	81-85	85-89	89-93	93-97	97-103	103-109	109-115	115-121	121-129
4 - HIPS	87-91	91-95	95-100	100-104	104-108	108-115	115-121	121-127	127-133	133-140

SIZE GUIDE 1) Take the anatomical measurements (body with underwear) without tightening, keeping the measuring tape taut. **Note:** in case you want to wear of the gowns already with the clothing underneath take the measurements already dressed. **2)** If there is a measure between 2 sizes between the measurements taken, we advise you to take the bigger one. **3)** The measurements in the table are expressed in centimeters.