

DETTAGLI

- Elastico e coulisse in vita
- 2 tasche
- 1 tasca sul retro

TAGLIE

XS ÷ 4XL

REGULAR FIT

COLORE

- C07 Lilla
- M18 Azzurro
- D29 Verde
- U35 Bordeaux
- U38 Bluette

TESSUTO

- 50% cotone
- 50% poliestere
- 180 g / m²

LUXSATIN



Le misure indicate si riferiscono alle taglie **S** per i capi femminili, **L** per i capi maschili. Per i capi a taglia unica le misure indicate sono effettive.

Regular Fit e taglio trendy per il pantalone unisex con coulisse, due tasche sui fianchi e piccola tasca posteriore. È realizzato in uno splendido cotone poliestere di 180 g / m², resistente alle alte temperature e al candeggio, Easycare e stiro facile.

COLORI DISPONIBILI



C07 Lilla

M18 Azzurro

D29 Verde

U35 Bordeaux

U38 Bluette

TABELLE TAGLIE
E CORRISPONDENZE

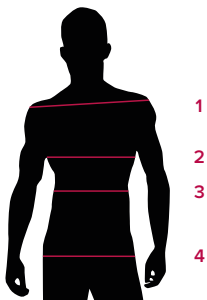
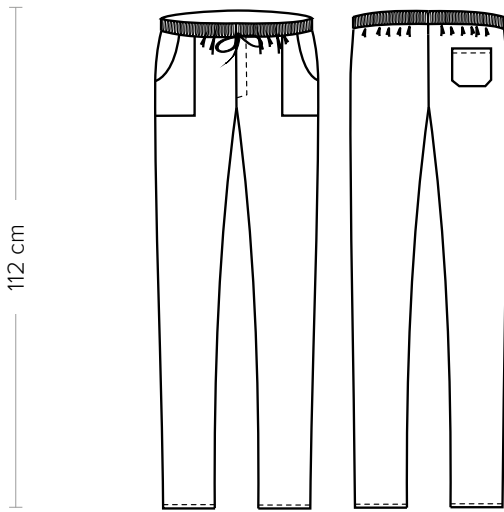


TABELLA ST-P3		REGULAR FIT										
TAGLIA	XXS	XS	S	M	L	XL	XXL	3XL	4XL	5XL	6XL	7XL
1 - SPALLE												
2 - TORACE												
3 - VITA	78-86	86-90	90-94	94-98	98-102	102-108	108-114	114-120	120-126	126-132	132-138	138-144
4 - BACINO	86-90	90-94	94-98	98-103	103-107	107-113	113-119	119-126	126-132	132-138	138-144	144-151

GUIDA ALLE TAGLIE **1)** Prendere le misure anatomiche (corpo con abbigliamento intimo) senza stringere mantenendo ben teso il metro. **Nota:** nel caso vogliate indossare dei camici già con dell'abbigliamento sotto prendete le misure già abbigliati. **2)** Nel caso tra le misure prese vi fosse una misura a cavallo fra 2 taglie vi consigliamo di prendere quella più grande. **3)** Le misure della tabella sono espresse in centimetri.



DETAILS

- Elasticated waistband with drawstring
- 2 pockets
- 1 rear pocket

SIZES

XS ÷ 4XL

REGULAR FIT

COLOURS

- C07 Lilac
- M18 Light blue
- D29 Green
- U35 Burgundy
- U38 Royal

FABRIC

- 50% cotton
- 50% polyester
- 180 g / m²

LUXSATIN



The measures indicated refer to sizes **S** for women, **L** for men. For one-size-fits-all garments, the measurements indicated are effective.

A regular fit and a trendy cut for the unisex pants with drawstring, two side pockets and a little rear pocket. Made of beautiful cotton-polyester (180 g / m²), these pants are resistant to high temperatures and bleaching, easy to take care of and to iron.

AVAILABLE COLOURS



C07 Lilac

M18 Light blue

D29 Green

U35 Burgundy

U38 Royal

SIZE TABLES AND CORRESPONDENCES

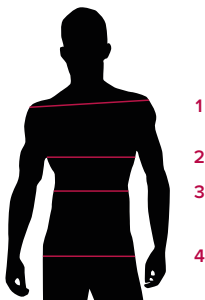


TABLE ST-P3 REGULAR FIT

SIZE	XXS	XS	S	M	L	XL	XXL	3XL	4XL	5XL	6XL	7XL
1 - SHOULDERS												
2 - CHEST												
3 - WAIST	78-86	86-90	90-94	94-98	98-102	102-108	108-114	114-120	120-126	126-132	132-138	138-144
4 - HIPS	86-90	90-94	94-98	98-103	103-107	107-113	113-119	119-126	126-132	132-138	138-144	144-151

SIZE GUIDE 1) Take the anatomical measurements (body with underwear) without tightening, keeping the measuring tape taut. **Note:** in case you want to wear of the gowns already with the clothing underneath take the measurements already dressed. **2)** If there is a measure between 2 sizes between the measurements taken, we advise you to take the bigger one. **3)** The measurements in the table are expressed in centimeters.