

DETTAGLI

- Taschino sul petto
- 2 tasche
- 2 spacchetti laterali

TAGLIE

XS ÷ 5XL

SLIM FIT

COLORE

M18 Azzurro
D29 Verde
U35 Bordeaux

U38 Bluette
Z48 Blu

TESSUTO

50% cotone
50% poliestere
180 g / m²

LUXSATIN



Le misure indicate si riferiscono alle taglie **S** per i capi femminili, **L** per i capi maschili. Per i capi a taglia unica le misure indicate sono effettive.

Il Best seller Giblor's da uomo, con scollo a V. Un capo sempre perfetto, senza tempo.

COLORI DISPONIBILI



M18 Azzurro



D29 Verde



U35 Bordeaux



U38 Bluette



Z48 Blu

TABELLE TAGLIE
E CORRISPONDENZE

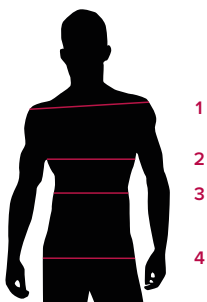
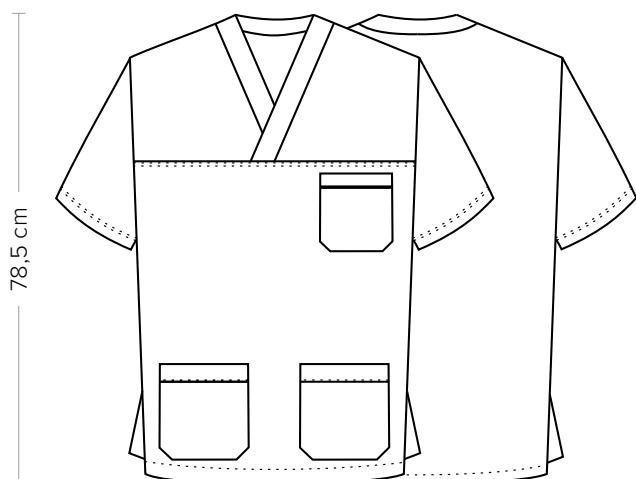


TABELLA ST-MED K1 SLIM FIT

| TAGLIA | XS | S | M | L | XL | XXL | 3XL | 4XL | 5XL |
|---------------------------------|--------|---------|---------|---------|---------|---------|---------|---------|---------|
| 1 - SPALLE | | | | | | | | | |
| 2 - TORACE circonferenza | 97-100 | 101-104 | 105-108 | 109-112 | 113-118 | 119-126 | 127-130 | 131-142 | 142-153 |
| 3 - VITA circonferenza | | | | | | | | | |
| 4 - BACINO circonferenza | 97-100 | 101-104 | 105-108 | 109-112 | 113-118 | 119-126 | 127-130 | 131-142 | 142-153 |

GUIDA ALLE TAGLIE **1)** Prendere le misure anatomiche (corpo con abbigliamento intimo) senza stringere mantenendo ben teso il metro. **Nota:** nel caso vogliate indossare dei camici già con dell'abbigliamento sotto prendete le misure già abbigliati. **2)** Nel caso tra le misure prese vi fosse una misura a cavallo fra 2 taglie vi consigliamo di prendere quella più grande. **3)** Le misure della tabella sono espresse in centimetri.



DETAILS

- Breast pocket
- 2 pockets
- 2 side vents

SIZES

XS ÷ 5XL

REGULAR FIT

COLOURS

M18 Light blue
D29 Green
U35 Burgundy

U38 Royal
Z48 Blue

FABRIC

50% cotton
50% polyester
180 g / m²

LUXSATIN



The measures indicated refer to sizes **S** for women, **L** for men. For one-size-fits-all garments, the measurements indicated are effective.

Giblor's bestseller for men, with V-neck. Always a perfect, timeless garment.

AVAILABLE COLOURS



M18 Azzurro



D29 Verde



U35 Bordeaux

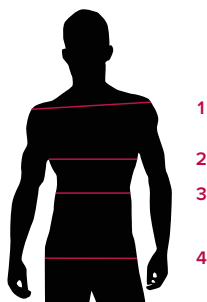


U38 Bluette



Z48 Blu

SIZE TABLES
AND CORRESPONDENCES



| TABLE ST-MED K1 | | SLIM FIT | | | | | | | | |
|--------------------------------|--|----------|---------|---------|---------|---------|---------|---------|---------|---------|
| SIZE | | XS | S | M | L | XL | XXL | 3XL | 4XL | 5XL |
| 1 - SHOULDERS | | | | | | | | | | |
| 2 - CHEST circumference | | 97-100 | 101-104 | 105-108 | 109-112 | 113-118 | 119-126 | 127-130 | 131-142 | 142-153 |
| 3 - WAIST circumference | | | | | | | | | | |
| 4 - HIPS circumference | | 97-100 | 101-104 | 105-108 | 109-112 | 113-118 | 119-126 | 127-130 | 131-142 | 142-153 |

SIZE GUIDE 1) Take the anatomical measurements (body with underwear) without tightening, keeping the measuring tape taut. **Note:** in case you want to wear of the gowns already with the clothing underneath take the measurements already dressed. **2)** If there is a measure between 2 sizes between the measurements taken, we advise you to take the bigger one. **3)** The measurements in the table are expressed in centimeters.