

DETTAGLI

- Taschino sul petto
- 2 tasche
- 2 spacchetti laterali

COLORE

C01 Bianco

TESSUTO

50% cotone
50% poliestere
180 g / m²

LUXSATIN

TAGLIE

XS ÷ 5XL

SLIM FIT



Le misure indicate si riferiscono alle taglie **S** per i capi femminili, **L** per i capi maschili. Per i capi a taglia unica le misure indicate sono effettive.

Il Best seller Giblor's da uomo, con scollo a V. Un capo sempre perfetto, senza tempo.

COLORI DISPONIBILI



C01 Bianco

TABELLE TAGLIE
E CORRISPONDENZE

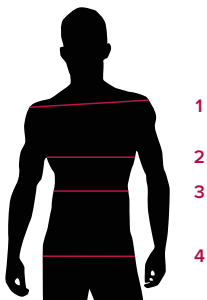
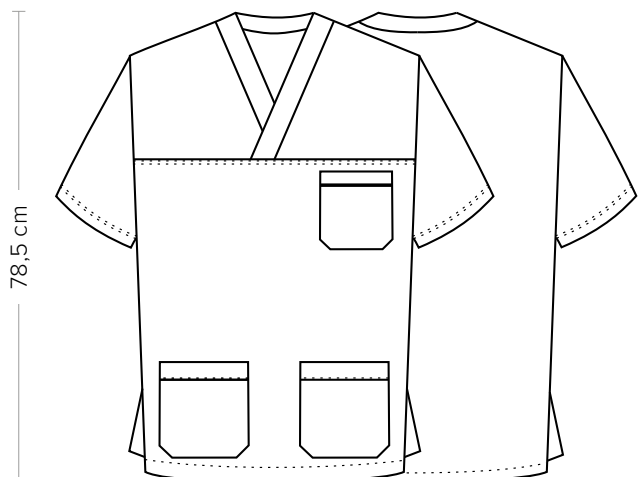


TABELLA ST-MED K1 SLIM FIT

TAGLIA	XS	S	M	L	XL	XXL	3XL	4XL	5XL
1 - SPALLE									
2 - TORACE circonferenza	97-100	101-104	105-108	109-112	113-118	119-126	127-130	131-142	142-153
3 - VITA circonferenza									
4 - BACINO circonferenza	97-100	101-104	105-108	109-112	113-118	119-126	127-130	131-142	142-153

GUIDA ALLE TAGLIE **1)** Prendere le misure anatomiche (corpo con abbigliamento intimo) senza stringere mantenendo ben teso il metro. **Nota:** nel caso vogliate indossare dei camici già con dell'abbigliamento sotto prendete le misure già abbigliati. **2)** Nel caso tra le misure prese vi fosse una misura a cavallo fra 2 taglie vi consigliamo di prendere quella più grande. **3)** Le misure della tabella sono espresse in centimetri.



DETAILS

- Breast pocket
- 2 pockets
- 2 side vents

SIZES

XS ÷ 5XL

REGULAR FIT

COLOURS

C01 White

FABRIC

50% cotton
50% polyester
180 g / m²

LUXSATIN



The measures indicated refer to sizes **S** for women, **L** for men. For one-size-fits-all garments, the measurements indicated are effective.

Giblor's best seller for men, with V collar. A perfect and timeless garment.

AVAILABLE COLOURS



C01 White

SIZE TABLES AND CORRESPONDENCES

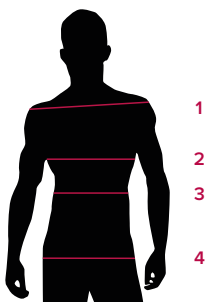


TABLE ST-MED K1		SLIM FIT								
SIZE		XS	S	M	L	XL	XXL	3XL	4XL	5XL
1 - SHOULDERS										
2 - CHEST circumference		97-100	101-104	105-108	109-112	113-118	119-126	127-130	131-142	142-153
3 - WAIST circumference										
4 - HIPS circumference		97-100	101-104	105-108	109-112	113-118	119-126	127-130	131-142	142-153

SIZE GUIDE 1) Take the anatomical measurements (body with underwear) without tightening, keeping the measuring tape taut. Note: in case you want to wear of the gowns already with the clothing underneath take the measurements already dressed. **2)** If there is a measure between 2 sizes between the measurements taken, we advise you to take the bigger one. **3)** The measurements in the table are expressed in centimeters.