

DETTAGLI

- Elastico e coulisse in vita
- 2 tasche davanti
- 1 tasca sul retro

TAGLIE

XS ÷ 3XL

REGULAR FIT

COLORE

Z44 Marrone

TESSUTO

70% poliestere
30% cotone
132 g / m²



Le misure indicate si riferiscono alle taglie **S** per i capi femminili, **L** per i capi maschili. Per i capi a taglia unica le misure indicate sono effettive.

COLORI DISPONIBILI



Z44 Marrone

TABELLE TAGLIE
E CORRISPONDENZE

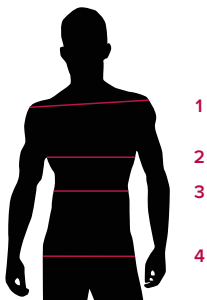
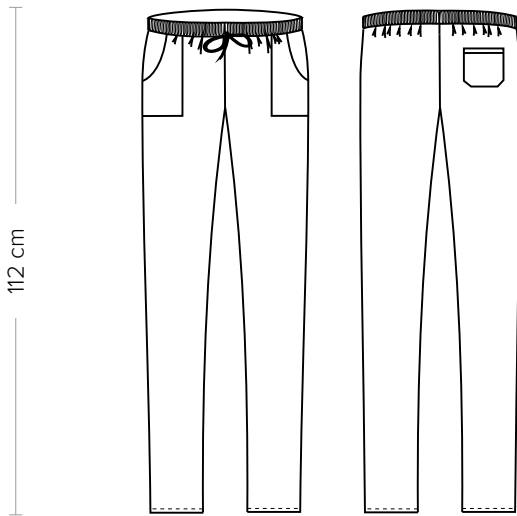


TABELLA ST-P3 REGULAR FIT												
TAGLIA	XXS	XS	S	M	L	XL	XXL	3XL	4XL	5XL	6XL	7XL
1 - SPALLE												
2 - TORACE												
3 - VITA	78-86	86-90	90-94	94-98	98-102	102-108	108-114	114-120	120-126	126-132	132-138	138-144
4 - BACINO	86-90	90-94	94-98	98-103	103-107	107-113	113-119	119-126	126-132	132-138	138-144	144-151

GUIDA ALLE TAGLIE **1)** Prendere le misure anatomiche (corpo con abbigliamento intimo) senza stringere mantenendo ben teso il metro. Nota: nel caso vogliate indossare dei camici già con dell'abbigliamento sotto prendete le misure già abbigliati. **2)** Nel caso tra le misure prese vi fosse una misura a cavallo fra 2 taglie vi consigliamo di prendere quella più grande. **3)** Le misure della tabella sono espresse in centimetri.



DETAILS

- Elasticated waistband with drawstring
- 2 front pockets
- 1 rear pocket

SIZES

XS ÷ 3XL

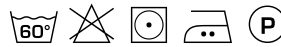
REGULAR FIT

COLOURS

Z44 Brown

FABRIC

70% polyester
30% cotton
132 g / m²



The measures indicated refer to sizes **S** for women, **L** for men. For one-size-fits-all garments, the measurements indicated are effective.

AVAILABLE COLOURS



Z44 Brown

SIZE TABLES
AND CORRESPONDENCES

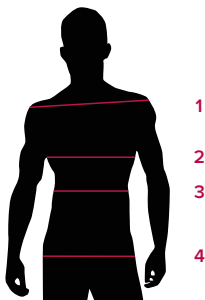


TABLE ST-P3 REGULAR FIT												
SIZE	XXS	XS	S	M	L	XL	XXL	3XL	4XL	5XL	6XL	7XL
1 - SHOULDERS												
2 - CHEST												
3 - WAIST	78-86	86-90	90-94	94-98	98-102	102-108	108-114	114-120	120-126	126-132	132-138	138-144
4 - HIPS	86-90	90-94	94-98	98-103	103-107	107-113	113-119	119-126	126-132	132-138	138-144	144-151

SIZE GUIDE 1) Take the anatomical measurements (body with underwear) without tightening, keeping the measuring tape taut. **Note:** in case you want to wear of the gowns already with the clothing underneath take the measurements already dressed. **2)** If there is a measure between 2 sizes between the measurements taken, we advise you to take the bigger one. **3)** The measurements in the table are expressed in centimeters.