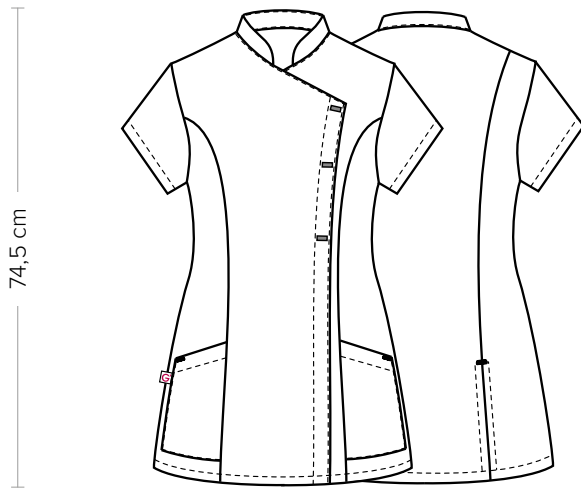


GRETA

ITEM CODE

COD. K2K00685

Giblor's
italian work/life specialist



DETAILS

- Concealed buttoning with press studs
- 3 visible press studs
- 2 pockets
- 2 rear vents

SIZES

XS ÷ 3XL

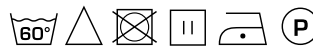
SLIM FIT

COLOURS

D21 Beige Z44 Brown
C10 Olive M12 Medium grey
U40 Teal Z43 Military green

FABRIC

100% polyester
110 g / m²



The measures indicated refer to sizes **S** for women, **L** for men. For one-size-fits-all garments, the measurements indicated are effective.

Ideal for different types of environments, from the spa to the kitchen and the hospitality world, the Greta tunic is made of **G-TECH PRO** fabric, with **graphene finishing**. This material offers exceptional performance: antibacterial, it maintains excellent breathability, is washable at high temperatures and tolerates splashes of bleach. Moreover, it dries quickly and is non-iron and colourfast. The Greta tunic features short sleeves and a slim fit, which enhances the figure of the any professional. The design of the garment is enriched by an elegant mandarin collar with an asymmetrical concealed buttoning that gives a touch of originality and elegance. The garment is embellished with three visible nickel-plated press studs, which give the right light and a touch of style to the figure. The tunic also features two side pockets and 2 rear vents, which lend grace and sinuosity to the body, satisfying every stylistic and professional need. Given the success achieved, the colour range has been expanded and now includes: beige, olive, teal, brown, grey and military green.

AVAILABLE COLOURS



D21 Beige



C10 Olive



U40 Teal



Z44 Brown



M12 Medium grey



Z43 Military green

SIZE TABLES
AND CORRESPONDENCES



1
2
3
4

TABLE ST-K1 SLIM FIT

SIZE	XS	S	M	L	XL	XXL	3XL	4XL	5XL
1 - SHOULDERS									
2 - CHEST circumference	82-88	88-92	92-96	96-102	102-108	108-116	116-124	124-134	134-144
3 - WAIST circumference	71-75	75-79	79-83	83-90	90-97	97-107	107-116	116-128	128-138
4 - HIPS circumference	92-96	96-100	100-104	104-111	111-117	117-125	125-134	134-143	143-153

SIZE GUIDE 1) Take the anatomical measurements (body with underwear) without tightening, keeping the measuring tape taut. **Note:** in case you want to wear of the gowns already with the clothing underneath take the measurements already dressed. **2)** If there is a measure between 2 sizes between the measurements taken, we advise you to take the bigger one. **3)** The measurements in the table are expressed in centimeters.