

**DETTAGLI**

- Abbottonatura nascosta con automatici  
- 2 tasche

**COLORE**

C01 Bianco  
U32 Nero

**TESSUTO**

65% poliestere  
35% cotone  
140 g / m<sup>2</sup>

**TAGLIE**

XS ÷ 4XL

**SLIM FIT**



Le misure indicate si riferiscono alle taglie **S** per i capi femminili, **L** per i capi maschili. Per i capi a taglia unica le misure indicate sono effettive.

Casacca estremamente femminile, con collo mezzo coreano arrotondato e profilo a contrasto, caratterizzata dalle due tasche nascoste a sacco. L'abbottonatura nascosta ed asimmetrica le dona un look professionale e trendy al tempo stesso.

**COLORI DISPONIBILI**

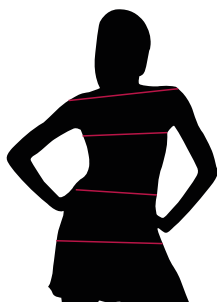


C01 Bianco



U32 Nero

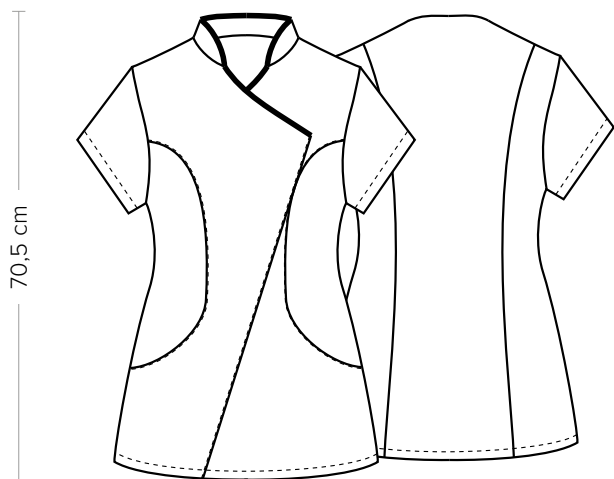
TABELLE TAGLIE  
E CORRISPONDENZE



**TABELLA ST-K1 SLIM FIT**

TAGLIA	XS	S	M	L	XL	XXL	3XL	4XL	5XL
<b>1 - SPALLE</b>									
<b>2 - TORACE</b> circonferenza	82-88	88-92	92-96	96-102	102-108	108-116	116-124	124-134	134-144
<b>3 - VITA</b> circonferenza	71-75	75-79	79-83	83-90	90-97	97-107	107-116	116-128	128-138
<b>4 - BACINO</b> circonferenza	92-96	96-100	100-104	104-111	111-117	117-125	125-134	134-143	143-153

**GUIDA ALLE TAGLIE** **1)** Prendere le misure anatomiche (corpo con abbigliamento intimo) senza stringere mantenendo ben teso il metro. **Nota:** nel caso vogliate indossare dei camici già con dell'abbigliamento sotto prendete le misure già abbigliati. **2)** Nel caso tra le misure prese vi fosse una misura a cavallo fra 2 taglie vi consigliamo di prendere quella più grande. **3)** Le misure della tabella sono espresse in centimetri.



**DETAILS**

- Concealed buttoning with press studs
- 2 pockets

**SIZES**

XS ÷ 4XL

**SLIM FIT**

**COLOURS**

- C01 White
- U32 Black

**FABRIC**

- 65% polyester
- 35% cotton
- 140 g / m<sup>2</sup>



The measures indicated refer to sizes **S** for women, **L** for men. For one-size-fits-all garments, the measurements indicated are effective.

Extremely feminine tunic, with round half mandarin collar and contrast piping, characterised by two hidden pockets. The concealed asymmetric buttoning gives it a professional and trendy look at the same time.

**AVAILABLE COLOURS**

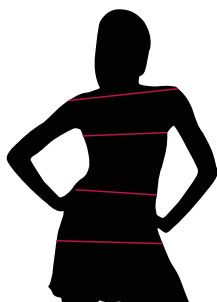


C01 White



U32 Black

**SIZE TABLES AND CORRESPONDENCES**



**TABLE ST-K1 SLIM FIT**

SIZE	XS	S	M	L	XL	XXL	3XL	4XL	5XL
<b>1 - SHOULDERS</b>									
<b>2 - CHEST</b> circumference	82-88	88-92	92-96	96-102	102-108	108-116	116-124	124-134	134-144
<b>3 - WAIST</b> circumference	71-75	75-79	79-83	83-90	90-97	97-107	107-116	116-128	128-138
<b>4 - HIPS</b> circumference	92-96	96-100	100-104	104-111	111-117	117-125	125-134	134-143	143-153

**SIZE GUIDE 1)** Take the anatomical measurements (body with underwear) without tightening, keeping the measuring tape taut. **Note:** in case you want to wear of the gowns already with the clothing underneath take the measurements already dressed. **2)** If there is a measure between 2 sizes between the measurements taken, we advise you to take the bigger one. **3)** The measurements in the table are expressed in centimeters.