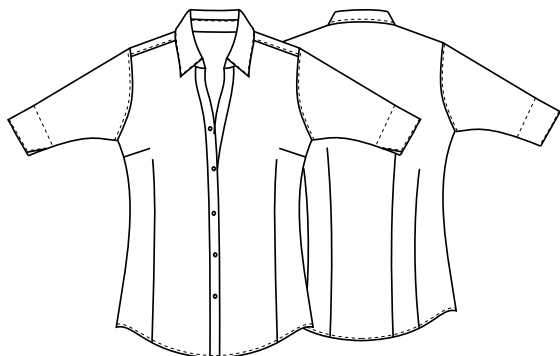


65 cm



#### DETTAGLI

- Collo fantasia  
- Manica 3/4

#### TAGLIE

XS ÷ 3XL

REGULAR FIT

#### COLORE

U32 Nero

#### TESSUTO

65% poliestere  
35% cotone  
110 g / m<sup>2</sup>



Le misure indicate si riferiscono alle taglie **S** per i capi femminili, **L** per i capi maschili. Per i capi a taglia unica le misure indicate sono effettive.

La camicia Sharm, ideale per ambienti di lavoro come ristoranti, alberghi o bar, è realizzata in un fresco poli-cotone da 110 g / m<sup>2</sup>. Con un taglio Slim Fit che esalta la silhouette femminile, maniche 3/4 e chiusura frontale con bottoni tono su tono. Il colletto semi-rigido, perfetto per accogliere un foulard, aggiunge un tocco di eleganza al design.

#### COLORI DISPONIBILI



U32 Nero

TABELLE TAGLIE  
E CORRISPONDENZE

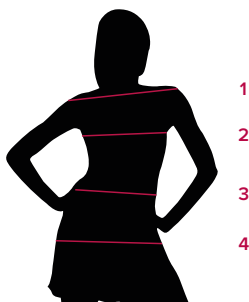


TABELLA ST-N3	REGULAR FIT						
TAGLIA	XS	S	M	L	XL	XXL	3XL
1 - SPALLE							
2 - CIRCONFERENZA TORACE	85-89	90-93	94-97	98-101	102-105	106-109	109-113
3 - CIRCONFERENZA VITA	73-77	78-81	82-84	85-89	90-93	94-97	97-100
4 - CIRCONFERENZA BACINO							

**GUIDA ALLE TAGLIE** **1)** Prendere le misure anatomiche (corpo con abbigliamento intimo) senza stringere mantenendo ben teso il metro. **Nota:** nel caso vogliate indossare dei camici già con dell'abbigliamento sotto prendete le misure già abbigliati. **2)** Nel caso tra le misure prese vi fosse una misura a cavallo fra 2 taglie vi consigliamo di prendere quella più grande. **3)** Le misure della tabella sono espresse in centimetri.

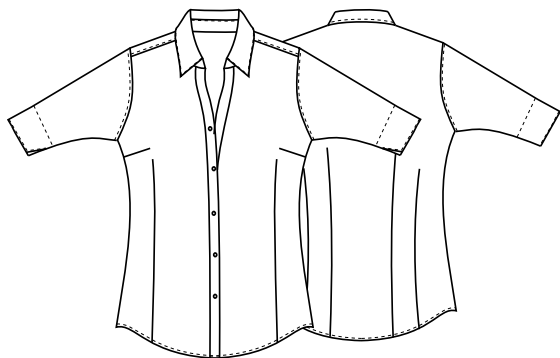
# SHARM

ITEM CODE

COD. K1N00518

**Giblor's**  
italian work/life specialist

65 cm



## DETAILS

- Open collar
- 3/4 Sleeve

## SIZES

XS ÷ 3XL

REGULAR FIT

## COLOURS

U32 Black

## FABRIC

65% polyester  
35% cotton  
110 g / m<sup>2</sup>



The measures indicated refer to sizes **S** for women, **L** for men. For one-size-fits-all garments, the measurements indicated are effective.

The Sharm shirt is perfect for work environments like restaurants, hotels, or bars. Made from a fresh poly-cotton fabric weighing 110 g / m<sup>2</sup>, it features a Slim Fit cut that flatters the feminine silhouette. With 3/4 sleeves, a front closure with tone-on-tone buttons, and a semi-rigid collar that pairs perfectly with a scarf, this shirt combines style and comfort.

## AVAILABLE COLOURS



U32 Black

SIZE TABLES  
AND CORRESPONDENCES

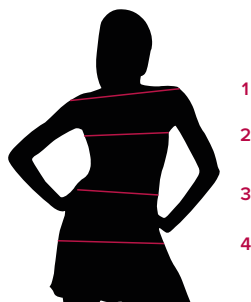


TABLE ST-N3		REGULAR FIT						
SIZE		XS	S	M	L	XL	XXL	3XL
1 - SHOULDERS								
2 - CHEST CIRCUMFERENCE		85-89	90-93	94-97	98-101	102-105	106-109	109-113
3 - WAIST CIRCUMFERENCE		73-77	78-81	82-84	85-89	90-93	94-97	97-100
4 - HIPS CIRCUMFERENCE								

**SIZE GUIDE 1)** Take the anatomical measurements (body with underwear) without tightening, keeping the measuring tape taut. **Note:** in case you want to wear of the gowns already with the clothing underneath take the measurements already dressed. **2)** If there is a measure between 2 sizes between the measurements taken, we advise you to take the bigger one. **3)** The measurements in the table are expressed in centimeters.

GIBLORS.COM