

#### DETTAGLI

- Scamiciato
- 1 grande tasca
- Coperto dietro

#### TAGLIE

Taglia unica

#### COLORE

U32 Nero

#### TESSUTO

100% poliestere  
160 g / m<sup>2</sup>



Lo scamiciato London è un modello trasversale dall'ho.re.ca. al wellness. Ha un elegante scollo a V, un'ampia tasca centrale, coperto nel dietro e regolabile con laccetti sui fianchi. E' realizzato in 100% poliestere di media grammatura, resistente alle alte temperature e al candeggio, ed è disponibile nel classico colore nero.

#### COLORI DISPONIBILI



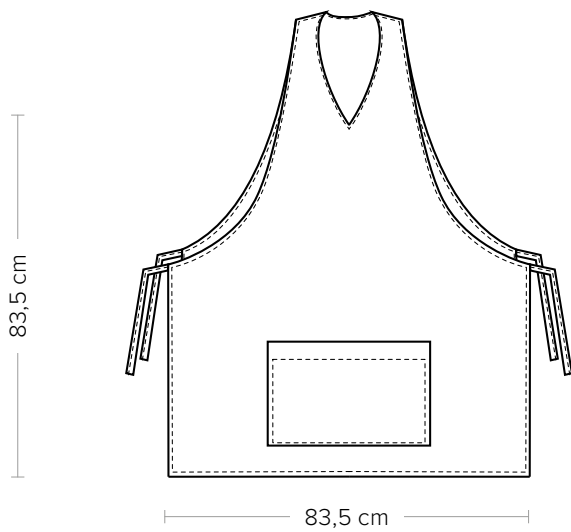
U32 Nero

# LONDON

ITEM CODE

COD. K1H00592

**Giblor's**  
italian work/life specialist



## DETAILS

- Pinafore
- 1 big pocket
- Covered backside

## SIZES

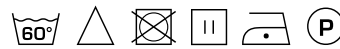
One size

## COLOURS

U32 Black

## FABRIC

100% polyester  
160 g / m<sup>2</sup>



The London pinafore is a transversal model, from the ho.re.ca. field to the wellness one. It has an elegant V-collar and a large central pocket. It is covered backside and adjustable with laces on the sides. It is made of 100% medium-weight polyester, resistant to high temperatures and bleaching, and it is available in the classic black colour.

## AVAILABLE COLOURS



U32 Black

[GIBLORS.COM](http://GIBLORS.COM)