

DETTAGLI

- Coreana
- Sfoderata
- Bottoni in metallo

TAGLIE

XS ÷ 3XL

SLIM FIT

COLORE

C01 Bianco

TESSUTO

100% poliestere
220 g / m²



Le misure indicate si riferiscono alle taglie **S** per i capi femminili, **L** per i capi maschili. Per i capi a taglia unica le misure indicate sono effettive.

La giacca Pier è perfetta per ambienti come reception e sala. Realizzata in resistente poliestere 100% di media grammatura, resiste ai lavaggi ad alte temperature. Dallo stile elegante e raffinato, ha un taglio slim, collo coreano e cinque bottoni in metallo dorato.

COLORI DISPONIBILI



C01 Bianco

TABELLE TAGLIE
E CORRISPONDENZE

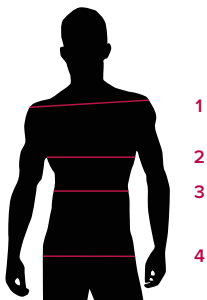
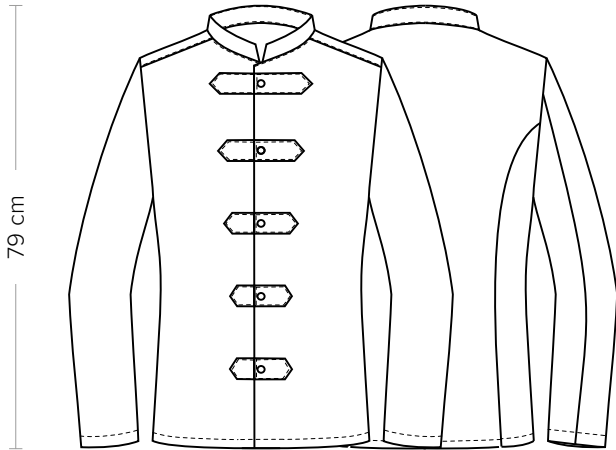


TABELLA ST-G1 SLIM FIT	XS	S	M	L	XL	XXL	3XL	4XL	5XL
1 - SPALLE	44	45	46	47	49	51	53	55	57
2 - TORACE circonferenza	92-96	96-100	100-104	104-111	111-116	116-124	124-132	132-142	142-152
3 - VITA circonferenza	80-84	84-88	88-92	92-99	99-106	106-116	116-126	126-138	138-148
4 - BACINO circonferenza	92-96	97-101	101-105	105-111	111-117	117-125	125-133	133-143	143-153

GUIDA ALLE TAGLIE **1)** Prendere le misure anatomiche (corpo con abbigliamento intimo) senza stringere mantenendo ben teso il metro. **Nota:** nel caso vogliate indossare dei camici già con dell'abbigliamento sotto prendete le misure già abbigliati. **2)** Nel caso tra le misure prese vi fosse una misura a cavallo fra 2 taglie vi consigliamo di prendere quella più grande. **3)** Le misure della tabella sono espresse in centimetri.



DETAILS

- Mandarin collar
- Unlined
- Metal buttons

SIZES
XS ÷ 3XL

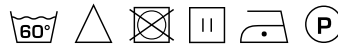
SLIM FIT

COLOURS

C01 White

FABRIC

100% polyester
220 g / m²



The measures indicated refer to sizes **S** for women, **L** for men. For one-size-fits-all garments, the measurements indicated are effective.

The Pier jacket is perfect for environments such as reception and dining areas. Made from durable 100% polyester with a medium weight, it withstands high-temperature washes. With its elegant and refined style, it features a slim fit, a mandarin collar, and five gold-tone metal buttons.

AVAILABLE COLOURS



C01 White

SIZE TABLES
AND CORRESPONDENCES

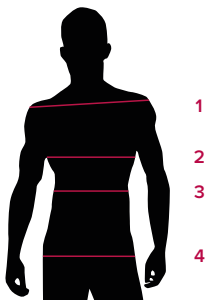


TABLE ST-G1 SLIM FIT									
SIZE	XS	S	M	L	XL	XXL	3XL	4XL	5XL
1 - SHOULDERS	44	45	46	47	49	51	53	55	57
2 - CHEST circumference	92-96	96-100	100-104	104-111	111-116	116-124	124-132	132-142	142-152
3 - WAIST circumference	80-84	84-88	88-92	92-99	99-106	106-116	116-126	126-138	138-148
4 - HIPS circumference	92-96	97-101	101-105	105-111	111-117	117-125	125-133	133-143	143-153

SIZE GUIDE **1)** Take the anatomical measurements (body with underwear) without tightening, keeping the measuring tape taut. Note: in case you want to wear of the gowns already with the clothing underneath take the measurements already dressed. **2)** If there is a measure between 2 sizes between the measurements taken, we advise you to take the bigger one. **3)** The measurements in the table are expressed in centimeters.