

### DETTAGLI

- Foderato
- 2 tasche
- 4 bottoni 4 fori
- Fascette regolabili

### TAGLIE

XS ÷ XXL

**SLIM FIT**

### COLORE

U32 Nero

### TESSUTO

100% poliestere  
160 g / m<sup>2</sup>



Le misure indicate si riferiscono alle taglie **S** per i capi femminili, **L** per i capi maschili. Per i capi a taglia unica le misure indicate sono effettive.

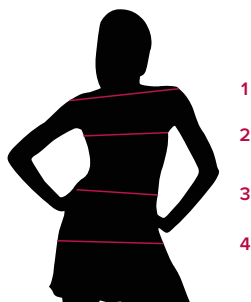
Il Gilet Petra, dallo stile classico e taglio Slim Fit, è perfetto per ambienti come reception e sala. Realizzato in poliestere di media grammatura e valorizzato dalla tecnologia indantrene, offre una resistenza eccellente ai lavaggi ad alte temperature. Il design monopetto con scollo a V, 4 bottoni in tinta e due tasche funzionali unisce praticità ed eleganza. Disponibile in nero.

### COLORI DISPONIBILI



U32 Nero

TABELLE TAGLIE  
E CORRISPONDENZE



TAGLIA	XS	S	M	L	XL	XXL	3XL
<b>1 - SPALLE</b>							
<b>2 - CIRCONFERENZA TORACE</b>	85-89	89-93	93-99	99-105	105-113	113-121	121-129
<b>3 - CIRCONFERENZA VITA</b>	73-77	77-81	81-87	87-93	93-101	101-109	109-117
<b>4 - CIRCONFERENZA BACINO</b>	87-92	92-96	96-102	102-108	108-117	117-124	124-132

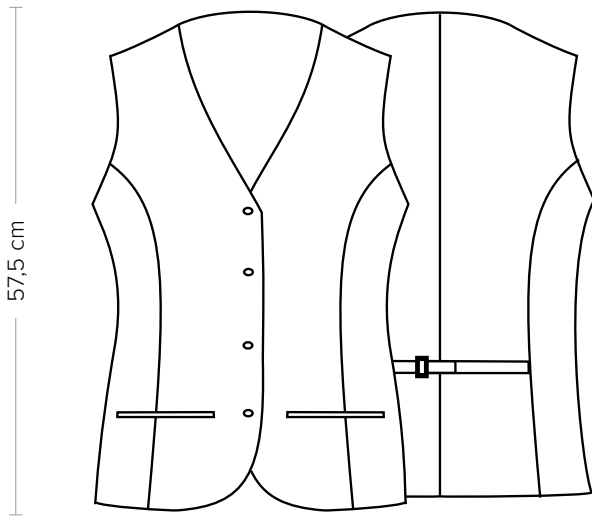
**GUIDA ALLE TAGLIE** **1)** Prendere le misure anatomiche (corpo con abbigliamento intimo) senza stringere mantenendo ben teso il metro. Nota: nel caso vogliate indossare dei camici già con dell'abbigliamento sotto prendete le misure già abbigliati. **2)** Nel caso tra le misure prese vi fosse una misura a cavallo fra 2 taglie vi consigliamo di prendere quella più grande. **3)** Le misure della tabella sono espresse in centimetri.

# PETRA

ITEM CODE

COD. K1E00665

**Giblor's**  
italian work/life specialist



**DETAILS**

- Lined
- 2 pockets
- 4 buttons with four-holes buttons
- Adjustable buckle

**SIZES**  
XS ÷ XXL

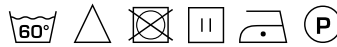
**SLIM FIT**

**COLOURS**

U32 Black

**FABRIC**

100% polyester  
160 g / m<sup>2</sup>



The measures indicated refer to sizes **S** for women, **L** for men. For one-size-fits-all garments, the measurements indicated are effective.

The Petra Vest combines a classic style with a Slim Fit, making it ideal for reception and dining areas. Crafted from medium-weight polyester and enhanced with indantrene technology, it provides excellent durability against high-temperature washes. Its single-breasted design with a V-neck, four matching buttons, and two functional pockets blends practicality with elegance. Available in black.

**AVAILABLE COLOURS**



U32 Black

SIZE TABLES AND CORRESPONDENCES

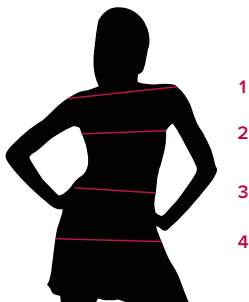


TABLE ST-E1 SLIM FIT							
SIZE	XS	S	M	L	XL	XXL	3XL
1 - SHOULDERS							
2 - CHEST CIRCUMFERENCE	85-89	89-93	93-99	99-105	105-113	113-121	121-129
3 - WAIST CIRCUMFERENCE	73-77	77-81	81-87	87-93	93-101	101-109	109-117
4 - HIPS CIRCUMFERENCE	87-92	92-96	96-102	102-108	108-117	117-124	124-132

**SIZE GUIDE 1)** Take the anatomical measurements (body with underwear) without tightening, keeping the measuring tape taut. Note: in case you want to wear of the gowns already with the clothing underneath take the measurements already dressed. **2)** If there is a measure between 2 sizes between the measurements taken, we advise you to take the bigger one. **3)** The measurements in the table are expressed in centimeters.