

SCHEDA TECNICA – GIUBBINO PROTEX
COD. HH647



CATEGORY I
 per rischi minimi

rossini.
 DESIGN

TESSUTO
 100% poliammide
 Peso 105 g/m²

EN 343:2019
SOLO TESSUTO

8000 mm WP / 5000 MVP

DESCRIZIONE

Giubbino realizzato in **tessuto antivento e impermeabile laminato a tre strati con cuciture termonastrate.**

Collo alto e chiusura centrale con **zip waterproof.**

Due tasche inferiori chiuse con zip waterproof.

Cappuccio a scomparsa inserito nel collo con bottoni automatici.



01 – BLU



04 – VERDE



05 – NERO

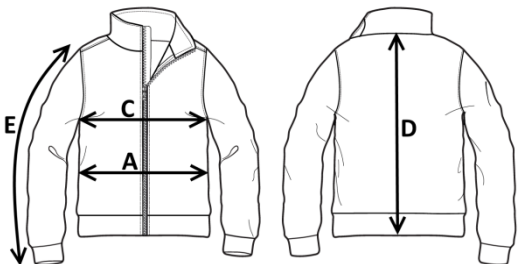


04 – VERDE



TAGLIE

XS, S, M, L, XL, XXL, XXXL, 4XL



Il margine di tolleranza produttivo, nel rispetto delle dimensioni della taglia, può essere del +/- 3%


SIZE - cm	XS	S	M	L	XL	XXL	XXXL	4XL
C – ½ CIRCONFERENZA TORACE	58	60	62	64	67	70	73	76
A – ½ CIRCONFERENZA VITA	56	58	60	62	65	68	71	74
D – LUNGHEZZA CENTRO DIETRO	69	71	73	75	77	79	80	82
E – LUNGHEZZA MANICA	62,5	64	65,5	67	68,5	70	71,5	73

 **TECHNICAL SHEET – PROTEX JACKET**
CODE HH647

CE
CATEGORY I
for minimum risks

rossini.
DESIGN

FABRIC
100% polyamide
Weight 105 g/m²

 EN 343:2019
FABRIC ONLY

8000 mm WP / 5000 MVP

DESCRIPTION

Jacket made of **three-layer laminated windproof and waterproof fabric with taped seams**.
High collar and central closure with **waterproof zip**.
Two lower pockets with waterproof zips.
Stow-away hood folded into the collar with snap buttons.



01 – BLUE



04 – GREEN



05 – BLACK



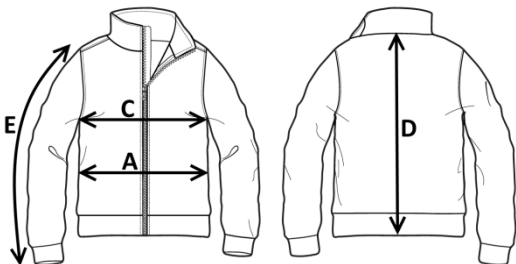
04 – GREEN

SIZES


XS, S, M, L, XL, XXL, XXXL, 4XL



Measurements may vary +/- 3%, tolerance within size scale



SIZE – cm	XS	S	M	L	XL	XXL	XXXL	4XL
C – ½ CHEST CIRCUMFERENCE	58	60	62	64	67	70	73	76
A – ½ WAIST CIRCUMFERENCE	56	58	60	62	65	68	71	74
D – CENTER BACK LENGTH	69	71	73	75	77	79	80	82
E – SLEEVE LENGTH	62,5	64	65,5	67	68,5	70	71,5	73

 **FICHA TÉCNICA – CHAQUETA PROTEX**
CÓD. HH647



CATEGORÍA I
para riesgos mínimos

rossini.
DESIGN

COMPOSICIÓN

100% poliamida

Peso 105 g/m²



EN 343:2019

SOLO TELA

8000 mm WP / 5000 MVP

DESCRIPCIÓN

Impermeable en tejido laminado de tres capas, cortaviento e impermeable, con costuras termoselladas.

Cuello alto y cierre central con cremallera impermeable. Dos bolsillos inferiores con cremallera impermeable.

Capucha interna integrada en el cuello con botones automáticos.



01 – AZUL



04 – VERDE



05 – NEGRO

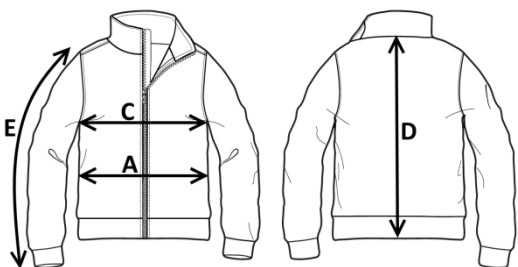


04 – VERDE



TALLAS

XS, S, M, L, XL, XXL, XXXL, 4XL



El margen de tolerancia productiva, respetando las dimensiones de la talla, puede ser de +/- 3%

SIZE - cm	XS	S	M	L	XL	XXL	XXXL	4XL
C – ½ CIRCUNFERENCIA TORÁCICA	58	60	62	64	67	70	73	76
A – ½ CIRCUNFERENCIA DE LA CINTURA	56	58	60	62	65	68	71	74
D – LONGITUD CENTRAL ESPALDA	69	71	73	75	77	79	80	82
E – LONGITUD DE LA MANGA	62,5	64	65,5	67	68,5	70	71,5	73

 FISA TEHNICA – JACHETE PROTEX

COD. HH647



CATEGORIA I
pentru riscuri minime

ROSSINI.
DESIGN

MATERIAL

100% poliamidă
Greutate 105 g/m²



EN 343:2019

DOAR MATERIAL

8000 mm WP / 5000 MVP

DESCRIERE

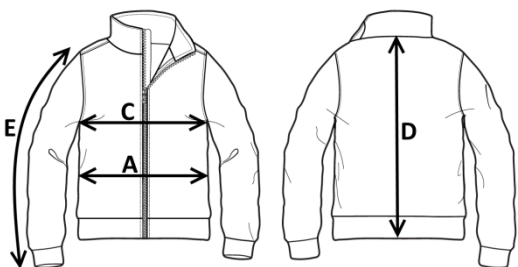
Jachetă confecționată din țesătură antivânt și impermeabilă, laminată în trei straturi, cu cusături termosudate.

Guler înalt și închidere centrală cu fermoar **waterproof**. Două buzunare inferioare închise cu fermoar **waterproof**.

Glugă ascunsă, introdusă în guler, cu închidere prin capse.

MĂRIMI

XS, S, M, L, XL, XXL, XXXL, 4XL



01 – BLEUMARIN



04 – VERDE



05 – NEGRU



04 – VERDE



Marja de toleranță a producției, respectând dimensiunile mărimii, poate fi de +/-3%.

SIZE - cm	XS	S	M	L	XL	XXL	XXXL	4XL
C – ½ CIRCUMFERINȚĂ TORACE	58	60	62	64	67	70	73	76
A – ½ CIRCUMFERINȚĂ TALIE	56	58	60	62	65	68	71	74
D – LUNGIME SPATE	69	71	73	75	77	79	80	82
E – LUNGIME MÂNECĂ	62,5	64	65,5	67	68,5	70	71,5	73

FICHE TECHNIQUE – BLOUSON PROTEX
CODE HH647



CATEGORY I
 pour les risques minimaux

rossini.
 DESIGN

TISSU
 100% polyamide
 Poids 105 g/m²



UNIQUEMENT TISSU

8000 mm WP / 5000 MVP

DESCRIPTION

Blouson réalisé en tissu laminé trois couches, coupe-vent et imperméable, avec coutures thermocollées.

Col montant et fermeture centrale avec Fermeture Éclair imperméable. Deux poches inférieures fermées par Fermeture Éclair imperméable.

Capuche dissimulée intégrée dans le col avec boutons-pression.



01 – BLEU



04 – VERT



05 – NOIR



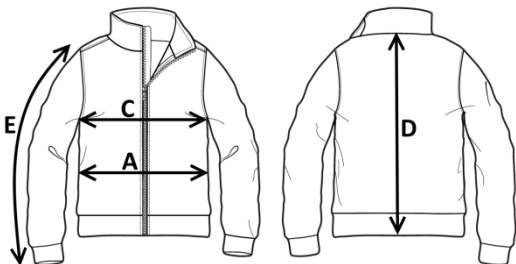
04 – VERT



TAILLES

XS, S, M, L, XL, XXL, XXXL, 4XL

La marge de tolérance de production, dans le respect des dimensions de la taille, peut être de +/- 3 %



SIZE - cm	XS	S	M	L	XL	XXL	XXXL	4XL
C – ½ TOUR DE POITRINE	58	60	62	64	67	70	73	76
A – ½ TOUR DE TAILLE	56	58	60	62	65	68	71	74
D – LONGUEUR CENTRE ARRIERE	69	71	73	75	77	79	80	82
E – LONGUEUR MANCHE	62,5	64	65,5	67	68,5	70	71,5	73