

SCHEDA TECNICA – POLO RAINOLD
COD. HH266

ROSSINI.
TECH

CE

CATEGORIA I
per rischi minimi

TESSUTO

100% cotone piqué
Peso 190 g/m²

DESCRIZIONE

Collo chiuso con due bottoni, colletto in costina smacchinata.
Fascia parasudore e lunotto doppio rinforzato.

TAGLIE

XS, S, M, L, XL, XXL, XXXL, 4XL



01 - BLU



04 - VERDE



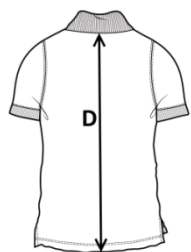
05 - NERO



12 - GRIGIO



04 - VERDE



Il margine di tolleranza produttivo, nel rispetto delle dimensioni della taglia, può essere del +/- 3%

SIZE - cm	XS	S	M	L	XL	XXL	XXXL	4XL
C – ½ CIRCONFERENZA TORACE	49	51	53	55	57	59	61	65
D – LUNGHEZZA CENTRO DIETRO	66	68	70	72	74	76	78	80

 **TECHNICAL SHEET – RAINOLD POLO SHIRT**
CODE HH266

ROSSINI.
TECH

CE

CATEGORY I
for minimum risks

FABRIC

100% cotton piqué
Weight 190 g/m²

DESCRIPTION

Collar closed with two buttons, rib-knit collar.
Sweatband and reinforced double bezel.

SIZES

XS, S, M, L, XL, XXL, XXXL, 4XL



01 - BLUE



04 - GREEN



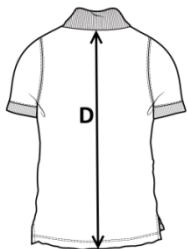
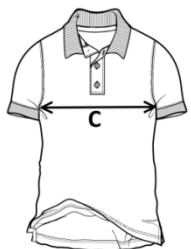
05 - BLACK



12 - GREY



04 - GREEN



Measurements may vary +/- 3%, tolerance within size scale

SIZE - cm	XS	S	M	L	XL	XXL	XXXL	4XL
C – ½ CHEST CIRCUMFERENCE	49	51	53	55	57	59	61	65
D – CENTER BACK LENGTH	66	68	70	72	74	76	78	80

 **FICHA TÉCNICA – POLO RAINOLD**
CÓD. HH266

ROSSINI.
TECH

CE

CATEGORÍA I
para riesgos mínimos

COMPOSICIÓN

100% algodón piqué

Peso 190 g/m

DESCRIPCIÓN

Cuello cerrado con dos botones, cuello de punto acanalado.
Banda parasudor y luneta doble reforzada.

TALLAS

XS, S, M, L, XL, XXL, XXXL, 4XL



01 - AZUL



04 - VERDE



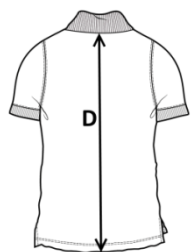
05 - NEGRO



12 - GRIS



04 - VERDE



El margen de tolerancia productiva, respetando las dimensiones de la talla, puede ser de +/- 3%

SIZE - cm	XS	S	M	L	XL	XXL	XXXL	4XL
C - ½ CIRCUNFERENCIA TORÁCICA	49	51	53	55	57	59	61	65
D - LONGITUD CENTRAL ESPALDA	66	68	70	72	74	76	78	80

 **FISA TEHNICA – TRICOU POLO RAINOLD**
COD. HH266

ROSSINI.
TECH

CE

CATEGORIA I
pentru riscuri minime

MATERIAL

100% piqué din bumbac
Greutate 190 g/m²

DESCRIERE

Guler închis cu două nasturi, guler din tricot reiat.
Bandă antisudoare și bezel dublu întărit.

MĂRIMI

XS, S, M, L, XL, XXL, XXXL, 4XL



01 - BLEUMARIN



04 - VERDE



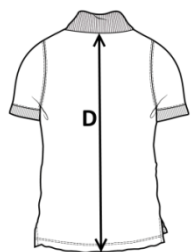
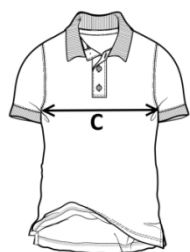
05 - NEGRU



12 - GRI



04 - VERDE



Marja de toleranță a producției, respectând dimensiunile mărimii, poate fi de +/-3%.

SIZE - cm	XS	S	M	L	XL	XXL	XXXL	4XL
C – ½ CIRCUMFERINȚĂ TORACE	49	51	53	55	57	59	61	65
D – LUNGIME SPATE	66	68	70	72	74	76	78	80

FICHE TECHNIQUE – POLO RAINOLD
CODE HH266

ROSSINI.
TECH

CE

CATÉGORIE I
pour les risques minimaux

TISSU

100% coton piqué
Poids 190 g/m²

DESCRIPTION

Col fermé par deux boutons, col en tricot côtelé.
Bandeau absorbant et lunette double renforcée.

TAILLES

XS, S, M, L, XL, XXL, XXXL, 4XL



01 - BLEU



04 - VERT



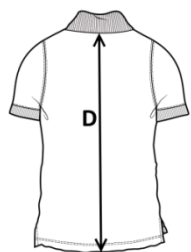
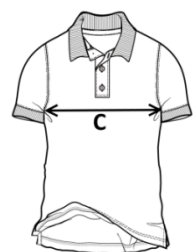
05 - NOIR



12 - GRIS



04 - VERT



La marge de tolérance de production, dans le respect des dimensions de la taille, peut être de +/- 3 %

SIZE - cm	XS	S	M	L	XL	XXL	XXXL	4XL
C – ½ TOUR DE POITRINE	49	51	53	55	57	59	61	65
D – LONGUEUR CENTRE ARRIERE	66	68	70	72	74	76	78	80