

**SCHEDA TECNICA – GILET AIR HI-VIS**  
COD. HH264

**ROSSINI.**  
TECH

**TESSUTO**

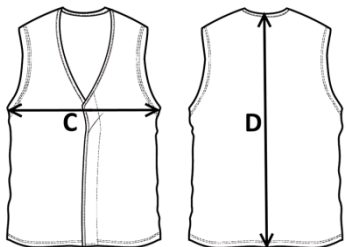
100% poliestere  
Peso 110 g/m<sup>2</sup>

**DESCRIZIONE**

Gilet realizzato in tessuto alta visibilità con pratiche multitasche e porta badge.

**TAGLIE**

S, M, L, XL, XXL, XXXL, 4XL



Il margine di tolleranza produttivo, nel rispetto delle dimensioni della taglia, può essere del +/- 3%

SIZE - cm	S	M	L	XL	XXL	XXXL	4XL
C – ½ CIRCONFERENZA TORACE	56	58	60	62	64	66	68
D – LUNGHEZZA CENTRO DIETRO	69	71	73	75	77	79	81



CATEGORIA II  
EN ISO 13688:2013+A1:2021



EN ISO 20471:2013+A1:2016  
CLASSE 2

25 LAVAGGI



08 - GIALLO



09 - ARANCIO



09 - ARANCIO



 **TECHNICAL SHEET – AIR HI-VIS VEST**  
CODE HH264

**ROSSINI.**  
TECH

CE

CATEGORY II  
EN ISO 13688:2013+A1:2021



EN ISO 20471:2013+A1:2016  
CLASS 2

25 WASHES



09 - ORANGE



**FABRIC**

100% polyester  
Weight 110 g/m<sup>2</sup>

**DESCRIPTION**

High-visibility fabric vest with practical multi-pockets and badge holder.



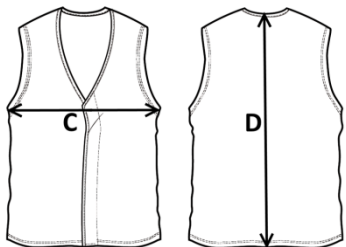
08 - YELLOW



09 - ORANGE


**SIZES**

S, M, L, XL, XXL, XXXL, 4XL



Measurements may vary +/- 3%, tolerance within size scale

SIZE - cm	S	M	L	XL	XXL	XXXL	4XL
C – ½ CHEST CIRCUMFERENCE	56	58	60	62	64	66	68
D – CENTER BACK LENGTH	69	71	73	75	77	79	81

 **FICHA TÉCNICA – CHALECO AIR HI-VIS**  
CÓD. HH264

**ROSSINI.**  
TECH

CE

CATEGORÍA II  
EN ISO 13688:2013+A1:2021



EN ISO 20471:2013+A1:2016  
CLASE 2

25 LAVADOS

**COMPOSICIÓN**

100% poliéster  
Peso 110 g/m<sup>2</sup>

**DESCRIPCIÓN**

Chaleco de tejido de alta visibilidad, con diseño multibolsillos práctico y porta tarjeta de identificación.

**TALLAS**

S, M, L, XL, XXL, XXXL, 4XL



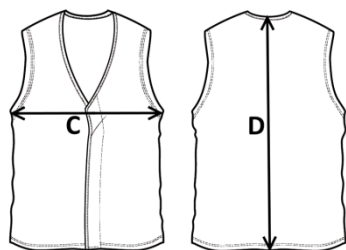
08 - AMARILLO



09 - NARANJA




09 - NARANJA



El margen de tolerancia productiva, respetando las dimensiones de la talla, puede ser de +/- 3%

SIZE - cm	S	M	L	XL	XXL	XXXL	4XL
C – ½ CIRCUNFERENCIA TORÁCICA	56	58	60	62	64	66	68
D – LONGITUD CENTRAL ESPALDA	69	71	73	75	77	79	81

 **FISA TEHNICA – VESTĂ AIR HI-VIS**  
COD. HH264

**MATERIAL**

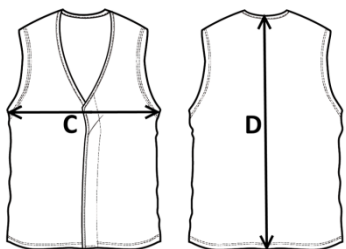
100% poliester  
Greutate 110 g/m<sup>2</sup>

**DESCRIERE**

Vestă din material cu înaltă vizibilitate, prevăzută cu buzunare multiple practice și suport pentru badge.

**MĂRIMI**

S, M, L, XL, XXL, XXXL, 4XL



Marja de toleranță a producției, respectând dimensiunile mărimii, poate fi de +/-3%.

SIZE - cm	S	M	L	XL	XXL	XXXL	4XL
C – ½ CIRCUMFERINȚĂ TORACE	56	58	60	62	64	66	68
D – LUNGIME SPATE	69	71	73	75	77	79	81

**ROSSINI.**  
TECH

CE

CATEGORIA II  
EN ISO 13688:2013+A1:2021



EN ISO 20471:2013+A1:2016  
CLASA 2

25 SPĂLĂRI



08 - GALBEN



09 - PORTOCALIU



09 - PORTOCALIU



**FICHE TECHNIQUE – GILET AIR HI-VIS**  
CODE HH266

**ROSSINI.**  
TECH

**TISSU**

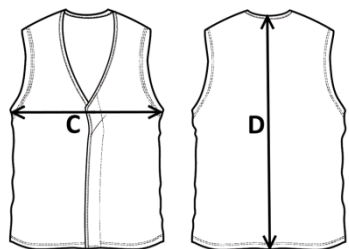
100% polyester  
Poids 110 g/m<sup>2</sup>

**DESCRIPTION**

Gilet en tissu haute visibilité, avec design multipoche pratique et doté d'un porte-badge.

**TAILLES**

S, M, L, XL, XXL, XXXL, 4XL



La marge de tolérance de production, dans le respect des dimensions de la taille, peut être de +/- 3 %

SIZE - cm	S	M	L	XL	XXL	XXXL	4XL
C – ½ TOUR DE POITRINE	56	58	60	62	64	66	68
D – LONGUEUR CENTRE ARRIÈRE	69	71	73	75	77	79	81



CATÉGORIE II  
EN ISO 13688:2013+A1:2021



EN ISO 20471:2013+A1:2016  
CLASSE 2

25 LAVAGES



08 - JAUNE



09 - ORANGE



09 - ORANGE

