

**SCHEDA TECNICA – T-SHIRT RAINOLD**  
COD. HH259

**ROSSINI.**  
TECH

CE

CATEGORIA I  
per rischi minimi

**TESSUTO**

100% cotone jersey  
Peso 160 g/m<sup>2</sup>

**DESCRIZIONE**

Girocollo a costine, fascia parasudore e lunotto doppio rinforzato.

Profili rifrangenti inseriti nel taglio delle spalle.

Inserto di tessuto mesh sotto le ascelle per migliorare l'aerazione.

**TAGLIE**

XS, S, M, L, XL, XXL, XXXL, 4XL



01 - BLU



04 - VERDE



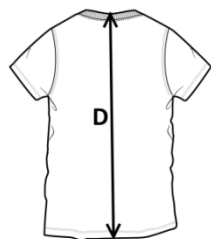
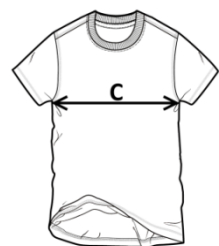
05 - NERO



12 - GRIGIO



04 - VERDE



Il margine di tolleranza produttivo, nel rispetto delle dimensioni della taglia, può essere del +/- 3%

SIZE - cm	XS	S	M	L	XL	XXL	XXXL	4XL
C - ½ CIRCONFERENZA TORACE	48	50	52	54	56	58	60	64
D - LUNGHEZZA CENTRO DIETRO	68	70	72	74	76	78	80	82

 **TECHNICAL SHEET – RAINOLD T-SHIRT**  
CODE HH259

**ROSSINI.**  
TECH

CE

CATEGORY I  
for minimum risks

**FABRIC**

100% cotton jersey  
Weight 160 g/m<sup>2</sup>

**DESCRIPTION**

Ribbed crew neck, sweatband and reinforced double bezel.  
Reflective piping inserted into the shoulder seam.  
**Mesh fabric insert under the armpits to improve ventilation.**

**SIZES**

XS, S, M, L, XL, XXL, XXXL, 4XL



01 - BLUE



04 - GREEN



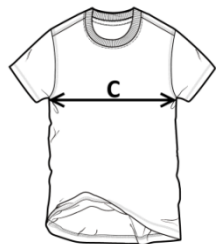
05 - BLACK



12 - GREY




04 - GREEN



Measurements may vary +/- 3%, tolerance within size scale

SIZE - cm	XS	S	M	L	XL	XXL	XXXL	4XL
C – ½ CHEST CIRCUMFERENCE	48	50	52	54	56	58	60	64
D – CENTER BACK LENGTH	68	70	72	74	76	78	80	82

 **FICHA TÉCNICA – CAMISETA RAINOLD**  
CÓD. HH259

**ROSSINI.**  
TECH

CE

CATEGORÍA I  
para riesgos mínimos

**COMPOSICIÓN**

100% algodón jersey  
Peso 160 g/m

**DESCRIPCIÓN**

Cuello acanalado, banda parasudor y luneta doble reforzada.

Perfiles reflectantes insertados en el corte de los hombros.

Inserto de tejido mesh bajo las axilas para mejorar la ventilación.

**TALLAS**

XS, S, M, L, XL, XXL, XXXL, 4XL



01 - AZUL



04 - VERDE



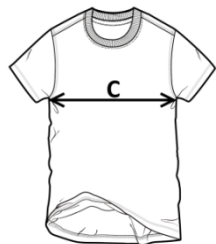
05 - NEGRO



12 - GRIS




04 - VERDE



El margen de tolerancia productiva, respetando las dimensiones de la talla, puede ser de +/- 3%

SIZE - cm	XS	S	M	L	XL	XXL	XXXL	4XL
C - ½ CIRCUNFERENCIA TORÁCICA	48	50	52	54	56	58	60	64
D - LONGITUD CENTRAL ESPALDA	68	70	72	74	76	78	80	82

 **FISA TEHNICA – TRICOU RAINOLD**  
COD. HH259

### MATERIAL

100% jersey din bumbac  
Greutate 160 g/m<sup>2</sup>

### DESCRIERE

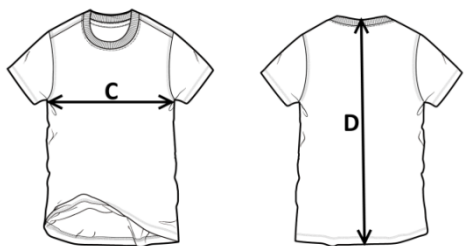
Guler rotund din tricot reiat, bandă antisudoare și bezel dublu întărit.

Piping reflectorizant inserat în cusătura de pe umăr.

**Inserție din material tip mesh sub brațe pentru îmbunătățirea ventilației.**

### MĂRIMI

XS, S, M, L, XL, XXL, XXXL, 4XL



Marja de toleranță a producției, respectând dimensiunile mărimii, poate fi de +/-3%.

SIZE - cm	XS	S	M	L	XL	XXL	XXXL	4XL
C – ½ CIRCUMFERINȚĂ TORACE	48	50	52	54	56	58	60	64
D – LUNGIME SPATE	68	70	72	74	76	78	80	82

**ROSSINI.**  
TECH

CE

CATEGORIA I  
pentru riscuri minime



01 - BLEUMARIN



04 - VERDE



05 - NEGRU



12 - GRI



04 - VERDE



**FICHE TECHNIQUE – T-SHIRT RAINOLD**  
CODE HH259

**ROSSINI.**  
TECH

CE

CATÉGORIE I  
pour les risques minimaux

**TISSU**

100% coton jersey  
Poids 160 g/m<sup>2</sup>

**DESCRIPTION**

Ras du cou côtelé, bandeau absorbant et lunette double renforcée.

Profils réfléchissants insérés dans la découpe des épaules.

**Insert en tissu mesh sous les aisselles** pour améliorer l'aération.

**TAILLES**

XS, S, M, L, XL, XXL, XXXL, 4XL



01 - BLEU



04 - VERT



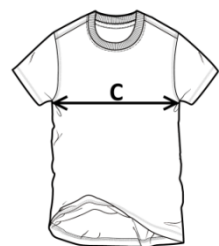
05 - NOIR



12 - GRIS



04 - VERT



La marge de tolérance de production, dans le respect des dimensions de la taille, peut être de +/- 3 %

SIZE - cm	XS	S	M	L	XL	XXL	XXXL	4XL
C – ½ TOUR DE POITRINE	48	50	52	54	56	58	60	64
D – LONGUEUR CENTRE ARRIERE	68	70	72	74	76	78	80	82