

**SCHEDA TECNICA – T-SHIRT R-STRETCH**  
COD. HH256

**ROSSINI.**  
TECH

CE

CATEGORIA I  
per rischi minimi

**TESSUTO**

100% cotone jersey  
Peso 160 g/m<sup>2</sup>

**DESCRIZIONE**

Girocollo a costine, fascia parasudore e lunotto doppio rinforzato.

Profili rifrangenti inseriti nel taglio delle spalle.

Motivo rifrangente stampato sulla manica.

**TAGLIE**

S, M, L, XL, XXL, XXXL, 4XL



01 - BLU



05 - NERO



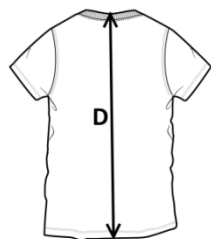
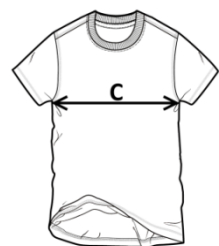
12 - GRIGIO



PD - PANNA



PD - PANNA



Il margine di tolleranza produttivo, nel rispetto delle dimensioni della taglia, può essere del +/- 3%

SIZE - cm	S	M	L	XL	XXL	XXXL	4XL
C – ½ CIRCONFERENZA TORACE	50	52	54	56	58	60	64
D – LUNGHEZZA CENTRO DIETRO	70	72	74	76	78	80	82

 **TECHNICAL SHEET – R-STRETCH T-SHIRT**  
CODE HH256

**ROSSINI.**  
TECH

CE

CATEGORY I  
for minimum risks

**FABRIC**

100% cotton jersey  
Weight 160 g/m<sup>2</sup>

**DESCRIPTION**

Ribbed crew neck, sweatband and reinforced double bezel.  
Reflective piping inserted into the shoulder seam.  
Reflective printed motif on the sleeve.

**SIZES**

S, M, L, XL, XXL, XXXL, 4XL



01 - BLUE



05 - BLACK



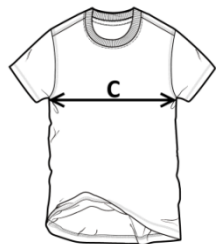
12 - GREY



PD - CREAM



PD - CREAM



Measurements may vary +/- 3%, tolerance within size scale

SIZE - cm	S	M	L	XL	XXL	XXXL	4XL
C – ½ CHEST CIRCUMFERENCE	50	52	54	56	58	60	64
D – CENTER BACK LENGTH	70	72	74	76	78	80	82

 **FICHA TÉCNICA – CAMISETA R-STRETCH**  
CÓD. HH256

**ROSSINI.**  
TECH

CE

CATEGORÍA I  
para riesgos mínimos

**COMPOSICIÓN**

100% algodón jersey  
Peso 160 g/m

**DESCRIPCIÓN**

Cuello acanalado, banda parasudor y luneta doble reforzada.  
Perfiles reflectantes insertados en el corte de los hombros.  
Motivo reflectante estampado en la manga.

**TALLAS**

S, M, L, XL, XXL, XXXL, 4XL



01 - AZUL



05 - NEGRO



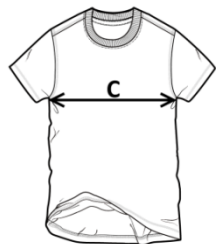
12 - GRIS



PD - CREMA




PD - CREMA



El margen de tolerancia productiva, respetando las dimensiones de la talla, puede ser de +/- 3%

SIZE - cm	S	M	L	XL	XXL	XXXL	4XL
C – ½ CIRCUNFERENCIA TORÁCICA	50	52	54	56	58	60	64
D – LONGITUD CENTRAL ESPALDA	70	72	74	76	78	80	82

 **FISA TEHNICA – TRICOU R-STRETCH**  
COD. HH256

**ROSSINI.**  
TECH

CE

CATEGORIA I  
pentru riscuri minime

**MATERIAL**

100% jersey din bumbac  
Greutate 160 g/m<sup>2</sup>

**DESCRIERE**

Guler rotund din tricot reiat, bandă antisudoare și bezel dublu întărit.

Piping reflectorizant inserat în cusătura de pe umăr.  
Motiv reflectorizant imprimat pe mânecă.

**MĂRIMI**

S, M, L, XL, XXL, XXXL, 4XL



01 - BLEUMARIN



05 - NEGRU



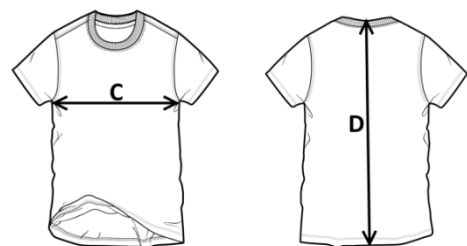
12 - GRI



PD - CREM



PD - CREM



Marja de toleranță a producției, respectând dimensiunile mărimii, poate fi de +/-3%.

SIZE - cm	S	M	L	XL	XXL	XXXL	4XL
C – ½ CIRCUMFERINȚĂ TORACE	50	52	54	56	58	60	64
D – LUNGIME SPATE	70	72	74	76	78	80	82

**FICHE TECHNIQUE – T-SHIRT R-STRETCH**  
CODE HH256

**ROSSINI.**  
TECH

CE

CATÉGORIE I  
pour les risques minimaux

**TISSU**

100% coton jersey  
Poids 160 g/m<sup>2</sup>

**DESCRIPTION**

Ras du cou côtelé, bandeau absorbant et lunette double renforcée.

Profils réfléchissants insérés dans la découpe des épaules.  
Motif réfléchissant imprimé sur la manche.

**TAILLES**

S, M, L, XL, XXL, XXXL, 4XL



01 - BLEU



05 - NOIR



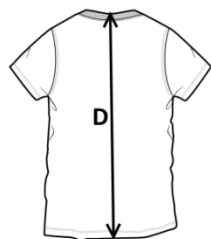
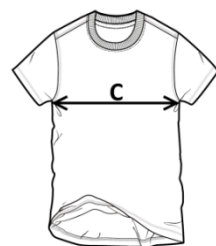
12 - GRIS



PD - BLANC LAIT



PD - BLANC LAIT



La marge de tolérance de production, dans le respect des dimensions de la taille, peut être de +/- 3 %

SIZE - cm	S	M	L	XL	XXL	XXXL	4XL
C – ½ TOUR DE POITRINE	50	52	54	56	58	60	64
D – LONGUEUR CENTRE ARRIERE	70	72	74	76	78	80	82