

SCHEDA TECNICA – T-SHIRT GOLDEN HI-VIS

COD. HH254

TESSUTO

ALTA VISIBILITÀ

55% cotone, 45% poliestere

Peso 150 g/m²



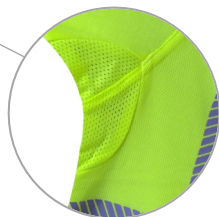
COTONE A
CONTATTO CON
LA PELLE

DESCRIZIONE

T-shirt mezza manica alta visibilità con fascia parasudore e lunetta di colore a contrasto nella parte posteriore del collo, girocollo a costine. Cuciture di colore in contrasto sulle spalle.

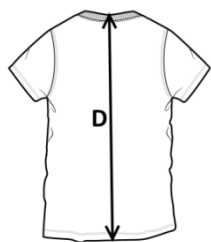
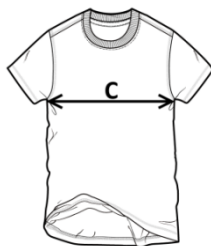
Strisce rifrangenti anteriori e posteriori stampate a transfer con pattern diagonale per conferire il massimo comfort a chi la indossa.

Inserto di tessuto **mesh** sotto le **ascelle** per migliorare l'aerazione.



TAGLIE

S, M, L, XL, XXL, XXXL, 4XL



Il margine di tolleranza produttivo, nel rispetto delle dimensioni della taglia, può essere del +/- 3%

SIZE - cm	S	M	L	XL	XXL	XXXL	4XL
C – ½ CIRCONFERENZA TORACE	51	53	55	57	59	61	65
D – LUNGHEZZA CENTRO DIETRO	71	73	75	77	79	81	82

rossini.
TECH

CE

Categoria II
EN ISO 13688:2013+A1:2021



EN ISO 20471:2013+A1:2016
CLASSE 2*

*Classe 3 se abbinata a:
-pantalone A00130 o A00117 o A00132
-pettorina A50130

50 LAVAGGI




08 - GIALLO



09 - ARANCIO



09 - ARANCIO

 **TECHNICAL SHEET – GOLDEN HI-VIS T-SHIRT**

CODE HH254



FABRIC

HIGH VISIBILITY

55% cotton, 45% polyester

Weight 150 g/m²



COTTON SIDE
NEXT TO THE
SKIN



Category II
EN ISO 13688:2013+A1:2021



EN ISO 20471:2013+A1:2016
CLASS 2*

*Class 3 if combined with:
-A00130 or A00117 or A00132 trousers
-A50130 dungarees

50 WASHES



09 - ORANGE

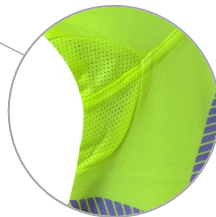
DESCRIPTION

High visibility short sleeve T-shirt with sweatband and bezel at the back of the neck in contrasting colour, ribbed crew neck.

Contrasting stitching on the shoulders.

Transfer-printed reflective stripes at the front and back with diagonal pattern to provide extra comfort for the user.

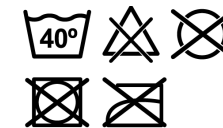
Mesh insert under the armpits to improve ventilation.



08 - YELLOW

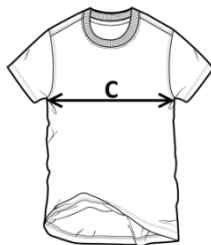


09 - ORANGE



SIZES

S, M, L, XL, XXL, XXXL, 4XL



Measurements may vary +/- 3%, tolerance within size scale

SIZE - cm	S	M	L	XL	XXL	XXXL	4XL
C – ½ CHEST CIRCUMFERENCE	51	53	55	57	59	61	65
D – CENTER BACK LENGTH	71	73	75	77	79	81	82

FICHA TÉCNICA – CAMISETA GOLDEN HI-VIS

CÓD. HH254

COMPOSICIÓN

ALTA VISIBILIDAD

55% algodón, 45% poliéster

Peso 150 g/m²



ALGODÓN EN CONTACTO CON LA PIEL

DESCRIPCIÓN

Camiseta de manga corta de alta visibilidad con banda antisudor y luneta de color en contraste en la parte posterior del cuello, cuello redondo en canalé.

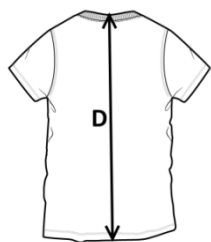
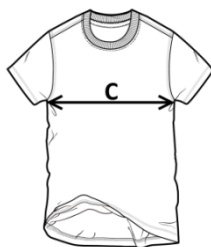
Costuras en color de contraste en los hombros.

Bandas reflectantes delanteras y traseras estampadas por transferencia con patrón diagonal para brindar el máximo confort al usuario.

Inserción de **tejido de malla** debajo de las axilas para mejorar la ventilación.

TALLAS

S, M, L, XL, XXL, XXXL, 4XL



El margen de tolerancia productiva, respetando las dimensiones de la talla, puede ser de +/- 3%

SIZE - cm	S	M	L	XL	XXL	XXXL	4XL
C – ½ CIRCUNFERENCIA TORÁCICA	51	53	55	57	59	61	65
D – LONGITUD CENTRAL ESPALDA	71	73	75	77	79	81	82

rossini.
TECH

CE

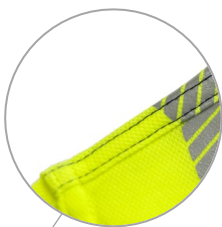
Categoría II
EN ISO 13688:2013+A1:2021



EN ISO 20471:2013+A1:2016
CLASE 2*

*Clase 3 si se combina con:
-pantalón A00130 o A00117 o A00132
-peto A50130

50 LAVADOS



08 - AMARILLO



09 - NARAJA



09 - NARAJA

FISA TEHNICA – TRICOU GOLDEN HI-VIS

COD. HH254

MATERIAL

ÎNALTĂ VIZIBILITATE

55% bumbac, 45% poliester

Greutate 150 g/m²



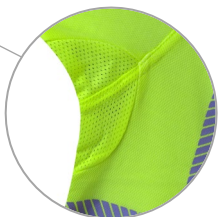
BUMBAC IN CONTACT CU PIELEA

DESCRIERE

Tricou cu mânecă scurtă de înaltă vizibilitate cu bandă de transpirație și ramă în spatele gâtului în culoare contrastantă, guler rotund cu nervuri. Cusături contrastante pe umeri.

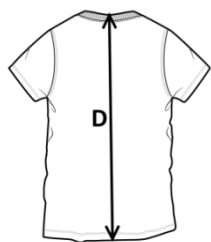
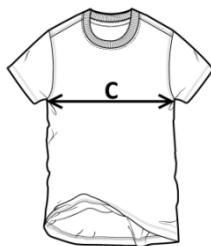
Dungi reflectorizante imprimare prin transfer în față și în spate cu model diagonal pentru a oferi un plus de confort utilizatorului.

Insertie din plasă sub axile pentru a îmbunătăți ventilația.



MĂRIMI

S, M, L, XL, XXL, XXXL, 4XL



Marja de toleranță a producției, respectând dimensiunile mărimii, poate fi de +/-3%.

SIZE - cm	S	M	L	XL	XXL	XXXL	4XL
C – ½ CIRCUMFERINȚĂ TORACE	51	53	55	57	59	61	65
D – LUNGIME SPATE	71	73	75	77	79	81	82



Categoria II
EN ISO 13688:2013+A1:2021



EN ISO 20471:2013+A1:2016
CLASA 2*

*Clasa 3 îatunci când este utilizată în combinație cu:
-pantaloni A00130 sau A00117 sau A00132
-salopetă cu pieptar A50130

50 SPĂLĂRI



08 - GALBEN



09 - PORTOCALIU



09 - PORTOCALIU



FICHE TECHNIQUE – T-SHIRT GOLDEN HI-VIS

CODE HH254

rossini.
TECH

TISSU
HAUTE VISIBILITÉ
55% coton, 45% polyester
Poids 150 g/m²



COTON EN CONTACT AVEC LA PEAU

CE

Catégorie II
EN ISO 13688:2013+A1:2021



EN ISO 20471:2013+A1:2016
CLASSE 2*

*Classe 3 si elle est associée à:
- pantalon A00130 ou A00117 ou A00132
- salopette A50130

50 LAVAGES

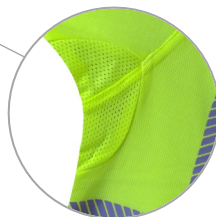
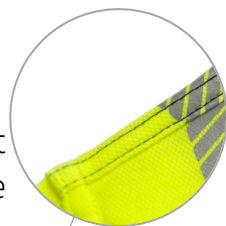


09 - ORANGE

DESCRIPTION

T-shirt haute visibilité avec bandeau absorbant et lunette de couleur contrastée dans la partie postérieure du col, col rond côtelé.

Surpiqûres de couleur contrastée sur les épaules. Bandes réfléchissantes avant et arrière imprimées par transfert avec motif diagonal pour offrir un maximum de confort au porteur. Insert en **tissu maille** sous les aisselles pour améliorer l'aération.



08 - JAUNE

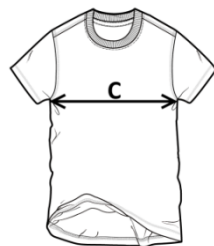


09 - ORANGE



TAILLES

S, M, L, XL, XXL, XXXL, 4XL



La marge de tolérance de production, dans le respect des dimensions de la taille, peut être de +/- 3 %

SIZE - cm	S	M	L	XL	XXL	XXXL	4XL
C – ½ TOUR DE POITRINE	51	53	55	57	59	61	65
D – LONGUEUR CENTRE ARRIERE	71	73	75	77	79	81	82