

**SCHEDA TECNICA – FELPA RAINOLD LIGHT**  
**COD. HH203**

**ROSSINI.**  
**TECH**

**CE**

CATEGORIA I  
 per rischi minimi

**TESSUTO**

80% cotone  
 20% poliestere  
 Peso 280 g/m<sup>2</sup>  
 Senza garzatura interna (French Terry)

**DESCRIZIONE**

Tessuto French Terry ultraleggero.  
 Cappuccio con coulisse, fascia parasudore interna al collo,  
 lunotto doppio rinforzato.  
 Tasche anteriori, taschino in sicurezza, profili rifrangenti  
 inseriti nel taglio delle spalle.  
 Polsi e fascia girovita in costina elastica.

**TAGLIE**

XS, S, M, L, XL, XXL, XXXL, 4XL, 5XL



01 - BLU



04 - VERDE



05 - NERO



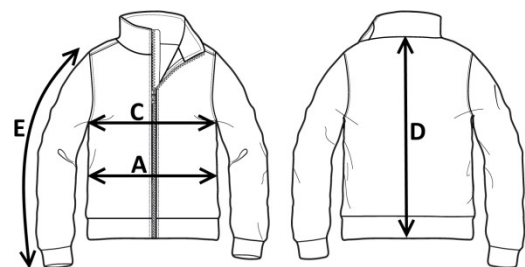
12 - GRIGIO



04 - VERDE



Il margine di tolleranza produttivo, nel rispetto delle dimensioni della taglia, può essere del +/- 3%



SIZE - cm	XS	S	M	L	XL	XXL	XXXL	4XL	5XL
C - ½ CIRCONFERENZA TORACE	47	50	53	56	59	62	65	69	73
A - ½ CIRCONFERENZA VITA	46	49	52	55	58	61	64	68	72
D - LUNGHEZZA CENTRO DIETRO	66	68	70	72	74	76	78	80	82
E - LUNGHEZZA MANICA	62	64	66	68	70	72	74	76	78

 **TECHNICAL SHEET – RAINOLD LIGHT SWEATSHIRT**  
CODE HH203

**ROSSINI.**  
TECH

CE

CATEGORY I  
for minimum risks

**FABRIC**

80% cotton  
20% polyester  
Weight 280 g/m<sup>2</sup>  
Unbrushed inner side (French Terry)

**DESCRIPTION**

Ultra-light French Terry fabric.  
Hood with drawstring, internal sweatband at the neck, reinforced double bezel.  
Front pockets and secure pocket, reflective inserts along the shoulder seams.  
Elasticated knit cuffs and waistband.

**SIZES**

XS, S, M, L, XL, XXL, XXXL, 4XL, 5XL



01 - BLUE



04 - GREEN



05 - BLACK



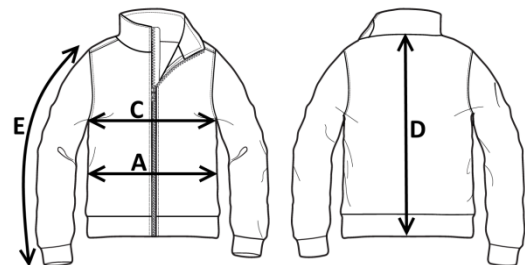
12 - GREY



04 - GREEN



Measurements may vary +/- 3%, tolerance within size scale



SIZE - cm	XS	S	M	L	XL	XXL	XXXL	4XL	5XL
C – ½ CHEST CIRCUMFERENCE	47	50	53	56	59	62	65	69	73
A – ½ WAIST CIRCUMFERENCE	46	49	52	55	58	61	64	68	72
D – CENTER BACK LENGTH	66	68	70	72	74	76	78	80	82
E – SLEEVE LENGTH	62	64	66	68	70	72	74	76	78

 **FICHA TÉCNICA – SUDADERA RAINOLD LIGHT**  
CÓD. HH203

**ROSSINI.**  
TECH

CE

CATEGORÍA I  
para riesgos mínimos

**COMPOSICIÓN**

80% algodón  
20% poliéster  
Peso 280 g/m<sup>2</sup>  
Sin interior afelpado (French Terry)

**DESCRIPCIÓN**

Tejido French Terry ultraligero.  
Capucha con cordón ajustable, banda parasudor interna al cuello, luneta doble reforzada.  
Bolsillos frontales y bolsillo de seguridad, perfiles reflectantes insertados en el corte de los hombros.  
Puños y banda en la cintura de punto elástico.

**TALLAS**

XS, S, M, L, XL, XXL, XXXL, 4XL, 5XL



01 - AZUL



04 - VERDE



05 - NEGRO



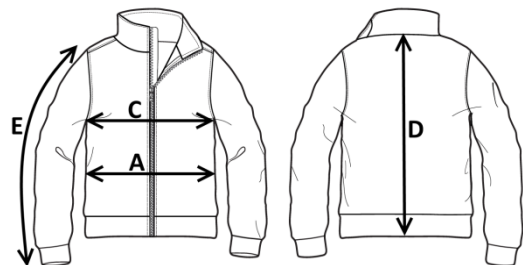
12 - GRIS



04 - VERDE



El margen de tolerancia productiva, respetando las dimensiones de la talla, puede ser de +/- 3%



SIZE - cm	XS	S	M	L	XL	XXL	XXXL	4XL	5XL
C – ½ CIRCUNFERENCIA TORÁCICA	47	50	53	56	59	62	65	69	73
A – ½ CIRCUNFERENCIA DE LA CINTURA	46	49	52	55	58	61	64	68	72
D – LONGITUD CENTRAL ESPALDA	66	68	70	72	74	76	78	80	82
E – LONGITUD DE LA MANGA	62	64	66	68	70	72	74	76	78

 **FISA TEHNICA – HANORAC RAINOLD LIGHT**  
COD. HH203

**ROSSINI.**  
TECH

CE

CATEGORIA I  
pentru riscuri minime

**MATERIAL**

80% bumbac

20% poliester

Greutate 280 g/m<sup>2</sup>

Partea interioară nebărbierită (French Terry)

**DESCRIERE**

Țesătură French Terry ultra-ușoară.

Capișon cu șnur de reglare, bandă interioară antisudoare la guler, bezel dublu întărit.

Buzunare frontale și buzunar de siguranță, inserții reflectorizante de-a lungul cusăturilor de pe umeri.

Manșete și bandă la talie din tricot elastic.

**MĂRIMI**

XS, S, M, L, XL, XXL, XXXL, 4XL, 5XL



01 - BLEUMARIN



04 - VERDE



05 - NEGRU



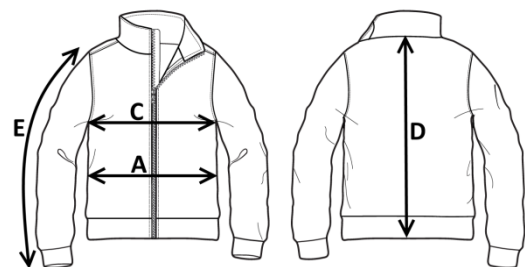
12 - GRI



04 - VERDE



Marja de toleranță a producției, respectând dimensiunile mărimii, poate fi de +/-3%.



SIZE - cm	XS	S	M	L	XL	XXL	XXXL	4XL	5XL
C – ½ CIRCUMFERINȚĂ TORACE	47	50	53	56	59	62	65	69	73
A – ½ CIRCUMFERINȚĂ TALIE	46	49	52	55	58	61	64	68	72
D – LUNGIME SPATE	66	68	70	72	74	76	78	80	82
E – LUNGIME MÂNECĂ	62	64	66	68	70	72	74	76	78

**FICHE TECHNIQUE – SWEAT-SHIRT RAINOLD LIGHT**  
**CODE HH203**

**ROSSINI.**  
**TECH**

**CE**

CATÉGORIE I  
 pour les risques minimaux

**TISSU**

80% coton  
 20% polyester  
 Poids 280 g/m<sup>2</sup>  
 Sans intérieur brossé (French Terry)

**DESCRIPTION**

Tissu French Terry ultraléger.  
 Capuche avec cordon de serrage, bandeau absorbant à l'encolure, lunette double renforcée.  
 Poches avant et poche de sécurité, profils réfléchissants insérés dans la découpe des épaules.  
 Poignets et ceinture en tricot élastique.

**TAILLES**

XS, S, M, L, XL, XXL, XXXL, 4XL, 5XL



01 - BLEU



04 - VERT



05 - NOIR



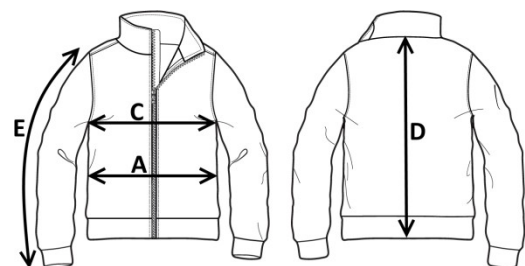
12 - GRIS



04 - VERT



La marge de tolérance de production, dans le respect des dimensions de la taille, peut être de +/- 3 %



SIZE - cm	XS	S	M	L	XL	XXL	XXXL	4XL	5XL
C – ½ TOUR DE POITRINE	47	50	53	56	59	62	65	69	73
A – ½ TOUR DE TAILLE	46	49	52	55	58	61	64	68	72
D – LONGUEUR CENTRE ARRIERE	66	68	70	72	74	76	78	80	82
E – LONGUEUR MANCHE	62	64	66	68	70	72	74	76	78