

**SCHEDA TECNICA – PILE OSAKA**  
**COD. HH132**

**CE... rossini.**

1° categoria per rischi minimi

**TESSUTO**

100% poliestere  
 Peso 280 g/m<sup>2</sup>

**DESCRIZIONE**

Pile con collo alto con zip corta, elastico ai polsi e cordino stringivita.

**TAGLIE**

S, M, L, XL, XXL, XXXL, 4XL, 5XL



01 – BLU



02 – BIANCO



04 – VERDE



05 – NERO



06 – AZZURRO ROYAL



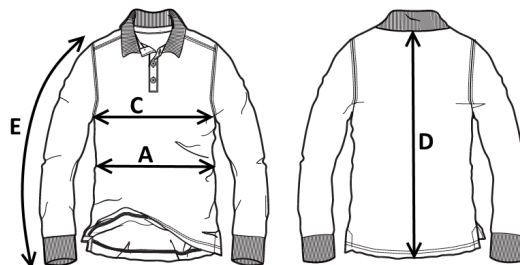
09 – ARANCIO



12 – GRIGIO SCURO MELANGE



06 – AZZURRO ROYAL



Il margine di tolleranza produttivo, nel rispetto delle dimensioni della taglia, può essere del +/- 3%

SIZE - cm	S	M	L	XL	XXL	XXXL	4XL	5XL
C – ½ CIRCONFERENZA TORACE	55	57	59	61	63	65	69	73
A – ½ CIRCONFERENZA VITA	52	54	56	58	60	62	66	70
D – LUNGHEZZA CENTRO DIETRO	68	69,5	71	72,5	74	75,5	77	78,5
E – LUNGHEZZA MANICA	64	65,5	67	68,5	70	71,5	73	74,5

 **TECHNICAL SHEET – OSAKA FLEECE**  
CODE HH132

**CE... rossini.**

1ST CATEGORY FOR MINIMUM RISKS

**FABRIC**

100% polyester  
Weight 280 g/m<sup>2</sup>



01 – BLUE



02 – WHITE



04 – GREEN



05 – BLACK



06 – ROYAL BLUE



09 – ORANGE



12 – DARK MELANGE GREY



06 – ROYAL BLUE



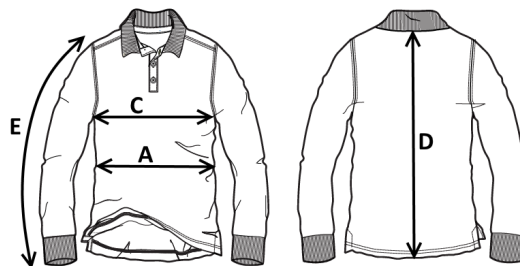
**DESCRIPTION**

High collar fleece with short zip, elasticated cuffs and drawstring at the waist.


**SIZES**

S, M, L, XL, XXL, XXXL, 4XL, 5XL

Measurements may vary +/- 3%, tolerance within size scale



SIZE - cm	S	M	L	XL	XXL	XXXL	4XL	5XL
C – ½ CHEST CIRCUMFERENCE	55	57	59	61	63	65	69	73
A – ½ WAIST CIRCUMFERENCE	52	54	56	58	60	62	66	70
D – CENTER BACK LENGTH	68	69,5	71	72,5	74	75,5	77	78,5
E – SLEEVE LENGTH	64	65,5	67	68,5	70	71,5	73	74,5

 **FICHA TÉCNICA – FORRO POLAR OSAKA**  
CÓD. HH132

**CE ROSSINI.**

1ª categoría para riesgos mínimos

**COMPOSICIÓN**  
100% poliéster  
Peso 280 g/m<sup>2</sup>

**DESCRIPCIÓN**

Forro polar de cuello alto con cremallera corta, elástico en los puños y cordón de ajuste para la cintura.

**TALLAS**

S, M, L, XL, XXL, XXXL, 4XL, 5XL



01 – AZUL



02 – BLANCO



04 – VERDE



05 – NEGRO



06 – AZUL REAL



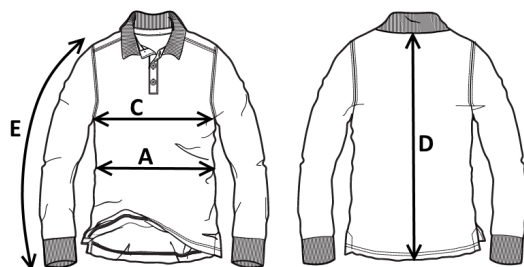
09 – NARANJA



12 – GRIS OSCURO MELANGE




06 – AZUL REAL



El margen de tolerancia productiva, respetando las dimensiones de la talla, puede ser de +/- 3%

SIZE - cm	S	M	L	XL	XXL	XXXL	4XL	5XL
C – ½ CIRCUNFERENCIA TORÁCICA	55	57	59	61	63	65	69	73
A – ½ CIRCUNFERENCIA DE LA CINTURA	52	54	56	58	60	62	66	70
D – LONGITUD CENTRAL ESPALDA	68	69,5	71	72,5	74	75,5	77	78,5
E – LONGITUD DE LA MANGA	64	65,5	67	68,5	70	71,5	73	74,5

 **FICHA TÉCNICA – POLAR OSAKA**  
COD. HH132

**CE... rossini.**

Categoria I pentru riscuri minime

**MATERIAL**

100% poliester  
Greutate 280 g/m<sup>2</sup>

**DESCRIERE**

Polar cu guler înalt cu fermoar scurt, elastic la manșete și șnur de reglare.

**MĂRIMI**

S, M, L, XL, XXL, XXXL, 4XL, 5XL



01 – BLEUMARIN



02 – ALB



04 – VERDE



05 – NEGRU



06 – ALBASTRU REGAL



09 – PORTOCALIU



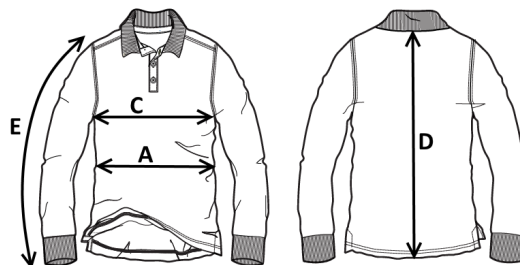
12 – GRI ÎNCHIS MELANJ



06 – ALBASTRU REGAL



Marja de toleranță a producției, respectând dimensiunile mărimii, poate fi de +/-3%.



SIZE - cm	S	M	L	XL	XXL	XXXL	4XL	5XL
C – ½ CIRCUMFERINȚĂ TORACE	55	57	59	61	63	65	69	73
A – ½ CIRCUMFERINȚĂ TALIE	52	54	56	58	60	62	66	70
D – LUNGIME SPATE	68	69,5	71	72,5	74	75,5	77	78,5
E – LUNGIME MÂNECĂ	64	65,5	67	68,5	70	71,5	73	74,5

**FICHE TECHNIQUE – POLAIRE OSAKA**  
**CODE HH132**

**CE... rossini.**

I catégorie pour les risques minimaux



06 – BLEU CLAIR ROYAL

**TISSU**

100% polyester  
 Poids 280 g/m<sup>2</sup>

**DESCRIPTION**

Polaire à col haut avec avec fermeture Éclair courte, élastique aux poignets et cordon de serrage.



01 – BLEU



02 – BLANC



04 – VERT



05 – NOIR



06 – BLEU CLAIR ROYAL



09 – ORANGE

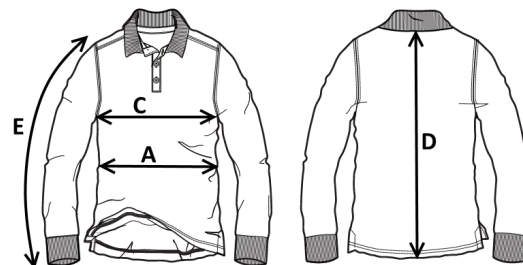


12 – GRIS FONCÉ MÉLANGÉ

**TAILLES**

S, M, L, XL, XXL, XXXL, 4XL, 5XL

La marge de tolérance de production, dans le respect des dimensions de la taille, peut être de +/- 3 %



SIZE - cm	S	M	L	XL	XXL	XXXL	4XL	5XL
C – ½ TOUR DE POITRINE	55	57	59	61	63	65	69	73
A – ½ TOUR DE TAILLE	52	54	56	58	60	62	66	70
D – LONGUEUR CENTRE ARRIERE	68	69,5	71	72,5	74	75,5	77	78,5
E – LONGUEUR MANCHE	64	65,5	67	68,5	70	71,5	73	74,5