

**SCHEDA TECNICA – FELPA TOKYO COLLO POLO**  
COD. HH107

**TESSUTO**

100% cotone  
Peso 280 g/m<sup>2</sup>  
Con garzatura

**DESCRIZIONE**

Felpa con collo a polo chiuso con tre bottoni, parasudore interno al collo, giromaniche dritto. Polsi e fascia girovita in maglia elastica a costine 2/1 con doppie cuciture.

**TAGLIE**

S, M, L, XL, XXL

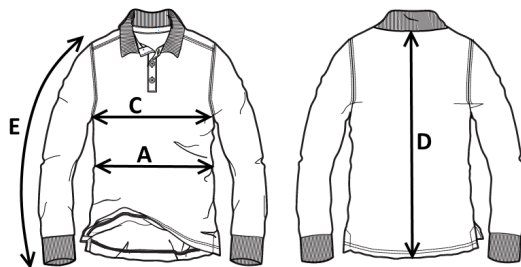
**rossini.**

CE

1° categoria  
per rischi minimi




01 – BLU



Il margine di tolleranza produttivo, nel rispetto delle dimensioni della taglia, può essere del +/- 3%

| SIZE - cm                      | S  | M  | L  | XL | XXL |
|--------------------------------|----|----|----|----|-----|
| C – ½ CIRCONFERENZA TORACE     | 53 | 56 | 59 | 62 | 65  |
| A – ½ CIRCONFERENZA VITA       | 49 | 52 | 55 | 58 | 61  |
| D – LUNGHEZZA CENTRO DIETRO    | 68 | 70 | 72 | 74 | 76  |
| E – LUNGHEZZA MANICA CON POLSO | 61 | 63 | 65 | 67 | 69  |

 **TECHNICAL SHEET – TOKYO POLO COLLAR SWEATSHIRT**  
CODE HH107

**FABRIC**

100% cotton  
Weight 280 g/m<sup>2</sup>  
Brushed

**DESCRIPTION**

Sweatshirt with polo collar closed with three buttons, sweatband inside the collar, straight armholes. Cuffs and waistband in elastic ribbed knit 2/1 with double stitching.

**SIZES**

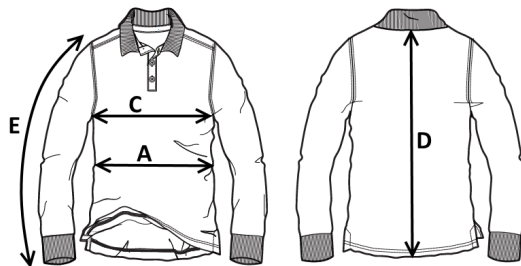
S, M, L, XL, XXL



1ST CATEGORY  
FOR MINIMUM RISKS



01 – BLUE



Measurements may vary +/- 3%, tolerance within size scale

| SIZE - cm                   | S  | M  | L  | XL | XXL |
|-----------------------------|----|----|----|----|-----|
| C – ½ CHEST CIRCUMFERENCE   | 53 | 56 | 59 | 62 | 65  |
| A – ½ WAIST CIRCUMFERENCE   | 49 | 52 | 55 | 58 | 61  |
| D – CENTER BACK LENGTH      | 68 | 70 | 72 | 74 | 76  |
| E – SLEEVE LENGTH WITH CUFF | 61 | 63 | 65 | 67 | 69  |

 **FICHA TÉCNICA – SUDADERA TOKYO CON CUELLO TIPO POLO**  
CÓD. HH107

**rossini.**



1ª categoría para riesgos mínimos

**COMPOSICIÓN**  
100% algodón  
Peso 280 g/m<sup>2</sup>  
Con acolchado

**DESCRIPCIÓN**

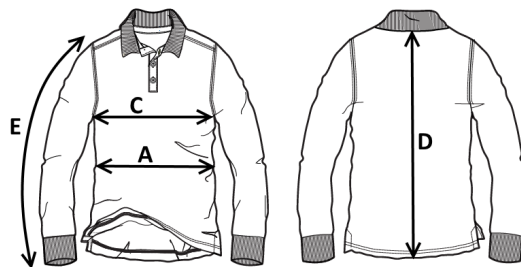
Sudadera con cuello de tipo polo y tres botones, protección para el sudor en el interior del cuello, borde de las mangas recto.  
Puños y banda en la cintura de punto elástico acanalado 2/1 con doble costura.



**TALLAS**  
S, M, L, XL, XXL




01 – AZUL



El margen de tolerancia productiva, respetando las dimensiones de la talla, puede ser de +/- 3%

| SIZE - cm                                | S  | M  | L  | XL | XXL |
|--|----|----|----|----|-----|
| C – ½ CIRCUNFERENCIA TORÁCICA            | 53 | 56 | 59 | 62 | 65  |
| A – ½ CIRCUNFERENCIA DE LA CINTURA       | 49 | 52 | 55 | 58 | 61  |
| D – LONGITUD CENTRAL ESPALDA             | 68 | 70 | 72 | 74 | 76  |
| E – LONGITUD DE LA MANGA HASTA LA MUÑECA | 61 | 63 | 65 | 67 | 69  |

 FISA TEHNICA – HANORAC TOKYO CU GULER POLO  
COD. HH107

### MATERIAL

100% bumbac  
Greutate 280 g/m<sup>2</sup>  
Cu sanforizare

### DESCRIERE

Hanorac cu guler tip polo închis cu trei nasturi, bandă de protecție contra transpirației inserată în guler, răscroială a mânecilor dreaptă.  
Manșetele și banda de pe talie din material elastic cu catifea cord 2/1 cu cusături duble.

### MĂRIMI

S, M, L, XL, XXL

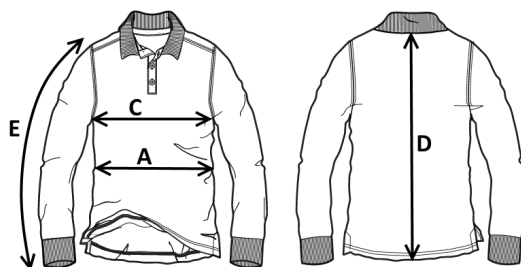
**rossini.**

CE

Categoria I  
pentru riscuri minime



01 – BLEUMARIN



Marja de toleranță a producției, respectând dimensiunile mărimii, poate fi de +/-3%.

| SIZE - cm                     | S  | M  | L  | XL | XXL |
|-------------------------------|----|----|----|----|-----|
| C – ½ CIRCUMFERINȚĂ TORACE    | 53 | 56 | 59 | 62 | 65  |
| A – ½ CIRCUMFERINȚĂ TALIE     | 49 | 52 | 55 | 58 | 61  |
| D – LUNGIME SPATE             | 68 | 70 | 72 | 74 | 76  |
| E – LUNGIME MÂNECĂ CU MANȘETĂ | 61 | 63 | 65 | 67 | 69  |

**FICHE TECHNIQUE- SWEAT SHIRT TOKYO COL POLO**  
CODE HH107

**TISSU**

100% coton  
Poids 280 g/m<sup>2</sup>  
Avec lainage

**DESCRIPTION**

Sweat-shirt avec col polo fermé avec trois boutons, bande anti-transpirante intérieur au cou, emmanchures droites.

Poignets et bandeau de taille en tricot élastique côtelé 2/1 avec doubles coutures.

**TAILLES**

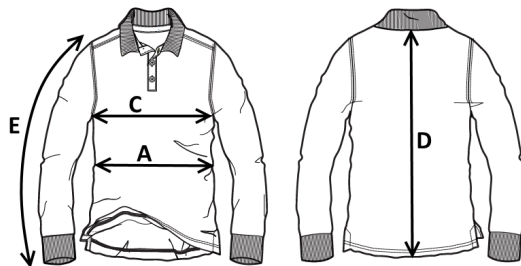
S, M, L, XL, XXL



I catégorie pour les risques minimaux



01 - BLEU



La marge de tolérance de production, dans le respect des dimensions de la taille, peut être de +/- 3 %

| SIZE - cm                        | S  | M  | L  | XL | XXL |
|----------------------------------|----|----|----|----|-----|
| C - ½ TOUR DE POITRINE           | 53 | 56 | 59 | 62 | 65  |
| A - ½ TOUR DE TAILLE             | 49 | 52 | 55 | 58 | 61  |
| D - LONGUEUR CENTRE ARRIERE      | 68 | 70 | 72 | 74 | 76  |
| E - LONGUEUR MANCHE AVEC POIGNET | 61 | 63 | 65 | 67 | 69  |