

SCHEDA TECNICA – CAMICE UOMO SERIO

COD. A60101

TESSUTO

Drill 3/1

100% cotone irrestringibile

Peso 280 g/m² per colore bianco

Drill 2/1

100% cotone irrestringibile

Peso 210 g/m² per colore nero

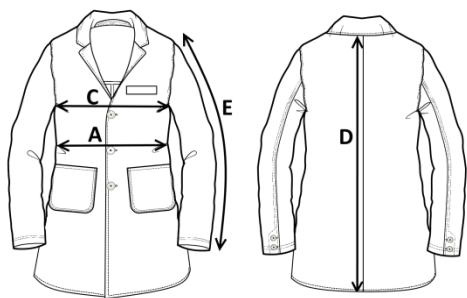
DESCRIZIONE

Camice uomo con chiusura con bottoni coperti, collo aperto, schiena intera.

Due tasche e un taschino applicati, senza martingala.

TAGLIE

Dalla 44 alla 64



Il margine di tolleranza produttivo, nel rispetto delle dimensioni della taglia, può essere del +/- 3%

SIZE – cm IT	44	46	48	50	52	54	56	58	60	62	64
SIZE – cm FR	40	42	44	46	48	50	52	54	56	58	60
SIZE – cm UK/US	34	36	38	40	42	44	46	48	50	52	54
SIZE – cm DE	46	48	50	52	54	56	58	60	62	64	66
C – ½ CIRCONFERENZA TORACE	54	56	58	60	62	64	66	68	70	72	74
A – ½ CIRCONFERENZA VITA	52	54	56	58	60	62	64	66	68	70	72
D – LUNGHEZZA CENTRO DIETRO	95,5	97	98,5	100	101,5	103	104,5	106	107,5	109	110,5
E – LUNGHEZZA MANICA	59	60	61	62	63	64	65	66	67	68	69

CE

rossini.

Categoria I
per rischi minimi




02 – BIANCO



05 – NERO



05 – NERO

 **TECHNICAL SHEET – SERIO MEN’S WORK COAT**
CODE A60101

FABRIC

Drill 3/1
100% non-shrink cotton
Weight 280 g/m² for white colour

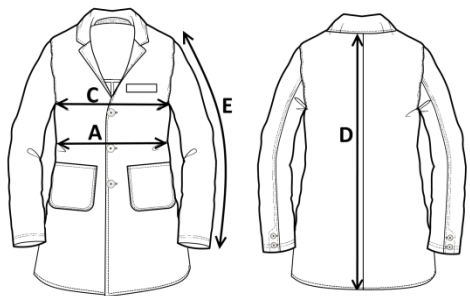
Drill 2/1
100% non-shrink cotton
Weight 210 g/m² for black colour

DESCRIPTION

Men’s work coat with covered button closure, open collar, full back.
Two patch pockets and a small breast pocket, without half belt.

SIZES

From 44 to 64



Measurements may vary +/- 3%, tolerance within size scale

	SIZE – cm IT	44	46	48	50	52	54	56	58	60	62	64
	SIZE – cm FR	40	42	44	46	48	50	52	54	56	58	60
	SIZE – cm UK/US	34	36	38	40	42	44	46	48	50	52	54
	SIZE – cm DE	46	48	50	52	54	56	58	60	62	64	66
C – ½ CHEST CIRCUMFERENCE		54	56	58	60	62	64	66	68	70	72	74
A – ½ WAIST CIRCUMFERENCE		52	54	56	58	60	62	64	66	68	70	72
D – CENTER BACK LENGTH		95,5	97	98,5	100	101,5	103	104,5	106	107,5	109	110,5
E – SLEEVE LENGTH		59	60	61	62	63	64	65	66	67	68	69



CATEGORY I
FOR MINIMUM RISKS




O2 – WHITE



O5 – BLACK



O5 – BLACK

 **FICHA TÉCNICA – BATA DE HOMBRE SERIO**
CÓD. A60101

rossini.

CE

Categoría I
para riesgos mínimos

COMPOSICIÓN

Drill 3/1

100% algodón sanforizado

Peso 280 g/m² para color blanco

Drill 2/1

100% algodón sanforizado

Peso 210 g/m² para color negro

DESCRIPCIÓN

Bata de hombre con cierre de botones cubiertos, cuello abierto y espalda entera.

Dos bolsillos de parche a los lados y uno en el pecho, sin trabilla.



02 – BLANCO



05 – NEGRO

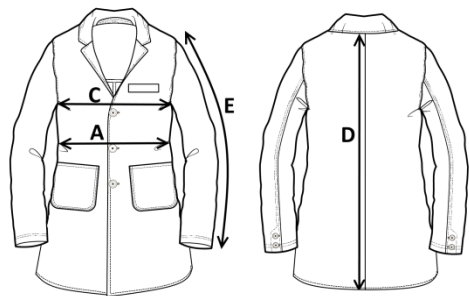


05 – NEGRO

TALLAS

De la 44 a la 64

El margen de tolerancia productiva, respetando las dimensiones de la talla, puede ser de +/- 3%



	SIZE – cm IT	44	46	48	50	52	54	56	58	60	62	64
	SIZE – cm FR	40	42	44	46	48	50	52	54	56	58	60
	SIZE – cm UK/US	34	36	38	40	42	44	46	48	50	52	54
	SIZE – cm DE	46	48	50	52	54	56	58	60	62	64	66
C – ½ CIRCUNFERENCIA TORÁCICA		54	56	58	60	62	64	66	68	70	72	74
A – ½ CIRCUNFERENCIA DE LA CINTURA		52	54	56	58	60	62	64	66	68	70	72
D – LONGITUD CENTRAL ESPALDA		95,5	97	98,5	100	101,5	103	104,5	106	107,5	109	110,5
E – LONGITUD DE LA MANGA		59	60	61	62	63	64	65	66	67	68	69

 **FISA TEHNICA – HALAT SERIO PENTRU BĂRBAȚI**
COD. A60101

MATERIAL

Drill 3/1

100% bumbac care nu intră la apă
Greutate 280 g/m² pentru culoarea albă

Drill 2/1

100% bumbac care nu intră la apă
Greutate 210 g/m² pentru culoarea neagră

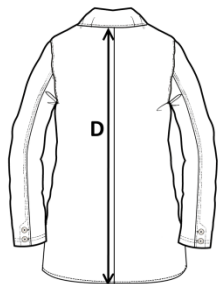
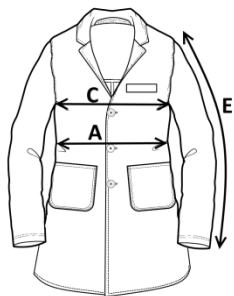
DESCRIERE

Halat bărbați cu închidere centrală cu nasturi acoperiți,
guler deschis, spate întreg.

Două buzunare obișnuite și unul mic aplicate, fără
martingală.

MĂRIMI

De la 44 la 64



Marja de toleranță a producției, respectând dimensiunile mărimii, poate fi de +/-3%.

SIZE – cm IT	44	46	48	50	52	54	56	58	60	62	64
SIZE – cm FR	40	42	44	46	48	50	52	54	56	58	60
SIZE – cm UK/US	34	36	38	40	42	44	46	48	50	52	54
SIZE – cm DE	46	48	50	52	54	56	58	60	62	64	66
C – ½ CIRCUMFERINȚĂ TORACE	54	56	58	60	62	64	66	68	70	72	74
A – ½ CIRCUMFERINȚĂ TALIE	52	54	56	58	60	62	64	66	68	70	72
D – LUNGIME SPATE	95,5	97	98,5	100	101,5	103	104,5	106	107,5	109	110,5
E – LUNGIME MÂNECĂ	59	60	61	62	63	64	65	66	67	68	69

CE...

rossini.

Categoria I
pentru riscuri minime



02 – ALB



05 – NEGRU



05 – NEGRU

FICHE TECHNIQUE – BLOUSE HOMME SERIO
CODE A60101

rossini.



Catégorie I
 pour les risques minimaux

TISSU

Drill 3/1
 100% coton non rétrécissable
 Poids 280 g/m² pour la couleur blanche

Drill 2/1
 100% coton non rétrécissable
 Poids 210 g/m² pour la couleur noire

DESCRIPTION

Blouse homme avec fermeture avec boutons couverts, col ouvert, dos entier.
 Deux poches et une petite poche appliquées, sans martingale.



02 – BLANC

05 – NOIR

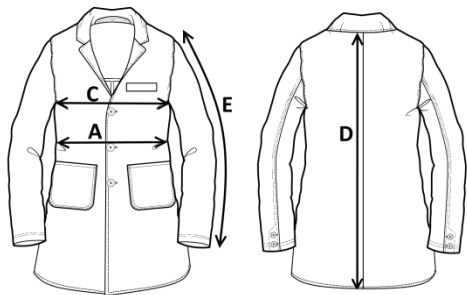


05 – NOIR

TAILLES

Du 44 au 64

La marge de tolérance de production, dans le respect des dimensions de la taille, peut être de +/- 3 %



	SIZE – cm IT	44	46	48	50	52	54	56	58	60	62	64
	SIZE – cm FR	40	42	44	46	48	50	52	54	56	58	60
	SIZE – cm UK/US	34	36	38	40	42	44	46	48	50	52	54
	SIZE – cm DE	46	48	50	52	54	56	58	60	62	64	66
C – ½ TOUR DE POITRINE		54	56	58	60	62	64	66	68	70	72	74
A – ½ TOUR DE TAILLE		52	54	56	58	60	62	64	66	68	70	72
D – LONGUEUR CENTRE ARRIERE		95,5	97	98,5	100	101,5	103	104,5	106	107,5	109	110,5
E – LONGUEUR MANCHE		59	60	61	62	63	64	65	66	67	68	69